

WAAS CH 72925 W04A	APP CRS 035°	Rwy Idg 5658 TDZE 2380 Apt Elev 2380
--	------------------------	---

RNAV (GPS) RWY 4

AVENGER FIELD (SWW)

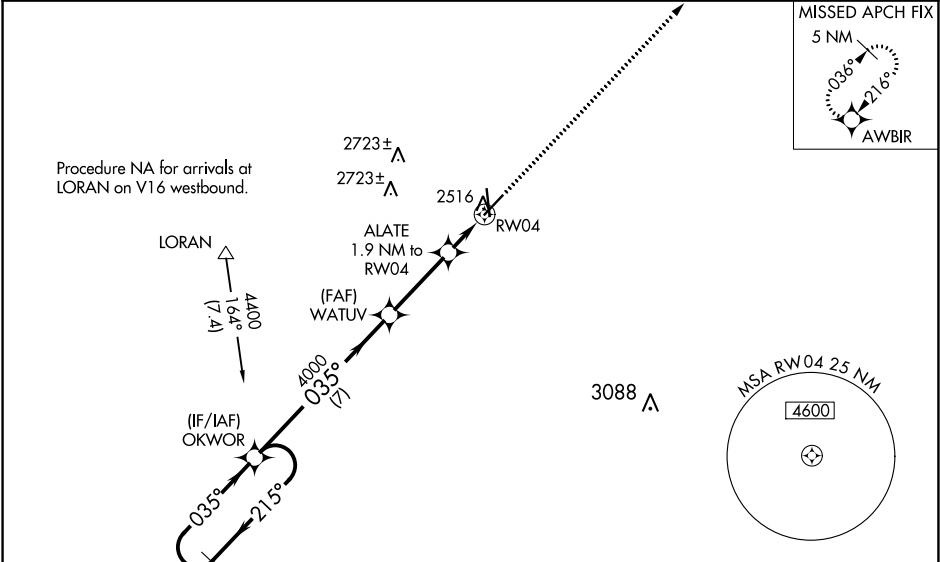
▼

▲

Baro-VNAV NA when using Snyder altimeter setting. For uncompensated Baro-VNAV systems, LNAV/VNAV NA below -19°C (-2°F) or above 29°C (84°F). DME/DME RNP-0.3 NA. Visibility reduction by helicopters NA. When local altimeter setting not received, use Snyder altimeter setting and increase all DA 72 feet and all MDA 80 feet. Increase LPV visibility all Cats ½ mile. Increase LNAV/VNAV visibility all Cats ¼ mile and LNAV visibility Cats C and D ⅛ mile. When VGSI inop, Straight-in/Circling Rwy 4 procedure NA at night. When VGSI inop, Circling Rwy 17 and 22 NA at night.

MISSED APPROACH:
Climb to 4400 direct
AWBIR and hold.

AWOS-3 119.025	ABILENE APP CON 127.2 282.3	UNICOM 122.8 (CTAF)
--------------------------	---------------------------------------	-------------------------------



5 NM Holding Pattern

OKWOR

4400

215°

035°

GP 3.00° TCH 40

WATUV

4000

035°

ALATE 1.9 NM to RW04

*3020

RW04

*LNAV only.

7 NM

3.1 NM

1.9 NM

CATEGORY	A	B	C	D
LPV DA	2630-1 250 (300-1)			
LNAV/VNAV DA	2727-1 ⅛ 347 (400-1 ⅛)			
LNAV MDA	2820-1 440 (500-1)		2820-1 ¼ 440 (500-1 ¼)	
CIRCLING	2880-1 500 (500-1)		2880-1 ½ 2940-2 560 (600-2)	

ELEV 2380 TDZE 2380

4400

AWBIR

2517

35

035° to RW04

REIL Rwy 17-35

MIRL Rwy 4-22 and 17-35

SC-2, 03 DEC 2020 to 31 DEC 2020

SC-2, 03 DEC 2020 to 31 DEC 2020