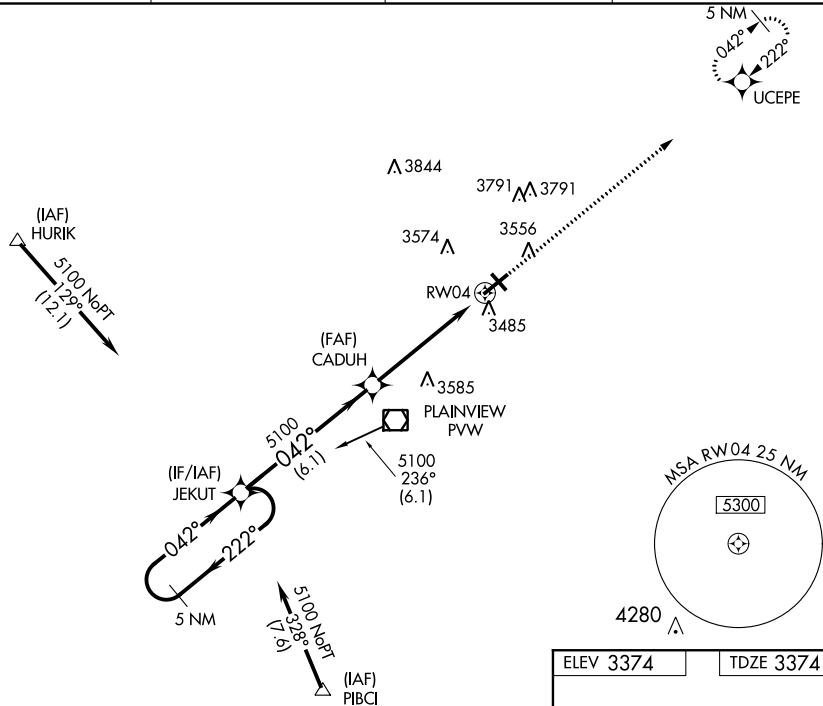


WAAS CH 53302 W04A	APP CRS 042°	Rwy Idg 5997 TDZE 3374 Apt Elev 3374
--	------------------------	---

RNAV (GPS) RWY 4

RNP APCH.				MISSED APPROACH: Climb to 5000, direct UCEPE and hold.
For uncompensated Baro-VNAV systems, LNAV/VNAV NA below -21°C or above 42°C. VDP and Baro-VNAV NA when using Lubbock altimeter setting. Rwy 4 helicopter visibility reduction below ¾ SM NA. When local altimeter setting is not received, use Lubbock altimeter setting: increase all DA 83 feet and increase all LPV and LNAV/VNAV visibility ¼ mile, increase all MDA 100 feet and LNAV Cat C/D and Circling Cat C visibility ¼ mile.				
ASOS 119.675	LUBBOCK APP CON 119.2 351.8	CLNC DEL 121.7	UNICOM 123.0 (CTAF) 0	



5NM Holding Pattern

VGSI and RNAV glidepath not coincident (VGSI Angle 3.50/TCH 51).

5000

UCEPE

JEKUT

CADUH

5100

222°

042°

5100

042°

*1 NM to RW04

RW04

*LNAV only.

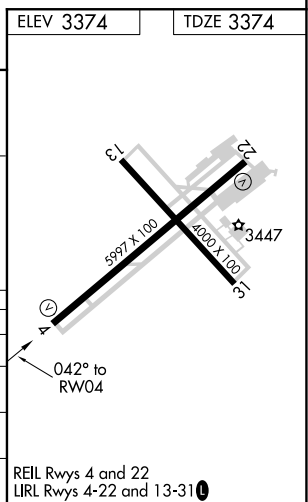
GP 3.00° TCH 45

6.1 NM

4.3 NM

1 NM

CATEGORY	A	B	C	D
LPV DA	3624-1		250 (300-1)	
LNAV/VNAV DA	3730-1 1/4		356 (400-1 1/4)	
LNAV MDA	3800-1 426 (500-1)		3800-1 1/4 426 (500-1 1/4)	
CIRCLING	3920-1 1/4 546 (600-1 1/4)	3940-1 1/4 566 (600-1 1/4)	3940-1 1/2 566 (600-1 1/2)	3940-2 566 (600-2)



RNAV (GPS) RWY 4