

WAAS CH 93827 W34A	APP CRS 342°	Rwy Idg TDZE 620 Apt Elev 628
--	------------------------	---

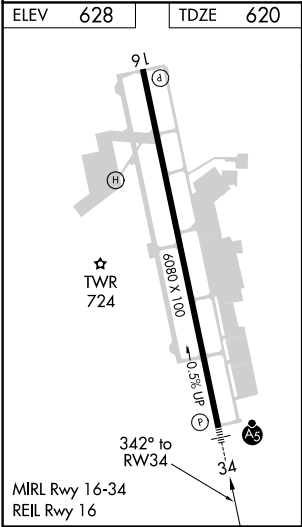
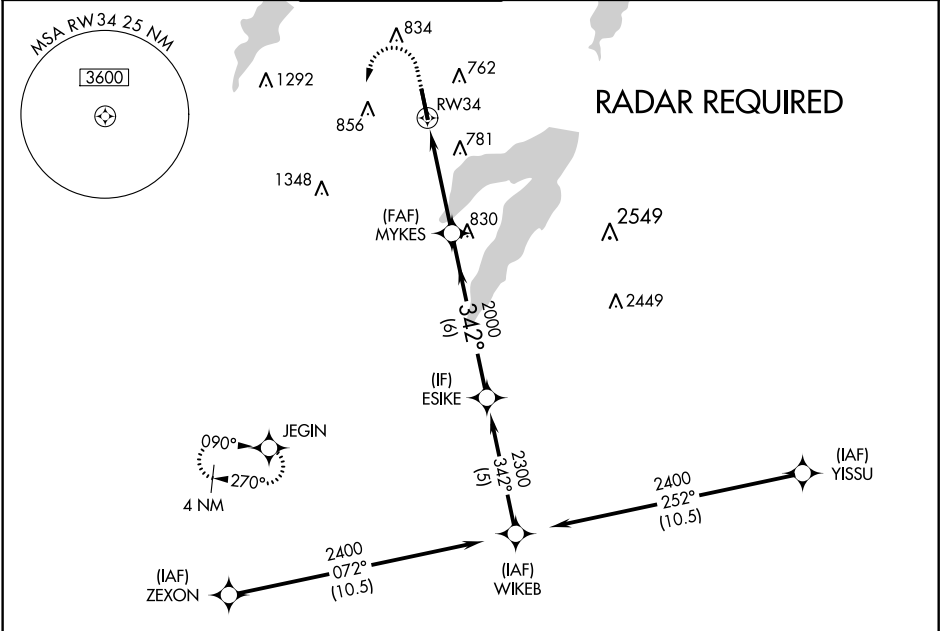
RNAV (GPS) RWY 34
ARLINGTON MUNI (GKY)




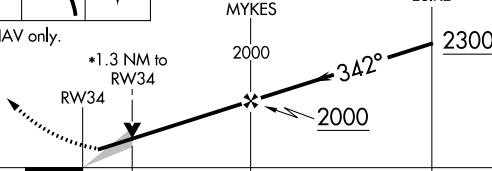
⚠ When local altimeter setting not received, use Grand Prairie Muni altimeter setting. For uncompensated Baro-VNAV systems, LNAV/VNAV NA below -16°C (4°F) or above 54°C (130°F). DME/DME RNP-0.3 NA. Inop table does not apply to LPV. For inop MALSR increase LNAV Cat A, B visibility to 1 mile.

MALSR

MISSED APPROACH: Climb to 1100 then climbing left turn to 2800 direct JEGIN and hold.

ASOS 127.375	REGIONAL APP CON 135.975 379.9	ARLINGTON TOWER ★ 128.625	GND CON 121.875	CLNC DEL 121.875	CLNC DEL 118.85 (When twr closed)	CTAF 128.625
------------------------	--	-------------------------------------	---------------------------	----------------------------	--	------------------------



1100	2800	JEGIN	VGSI and RNAV glidepath not coincident (VGSI Angle 3.00/TCH 55).		
					
*LNAV only.					
					
CATEGORY	A		B	C	D
LPV DA	820-¾		200 (200-¾)		NA
LNAV/ VNAV	DA	1021-¾	401 (400-¾)		NA
LNAV MDA		1060-¾	440 (500-¾)		NA
CIRCLING	1100-1	472 (500-1)	1100-1½ 472 (500-1½)		NA