

RNP APCH.

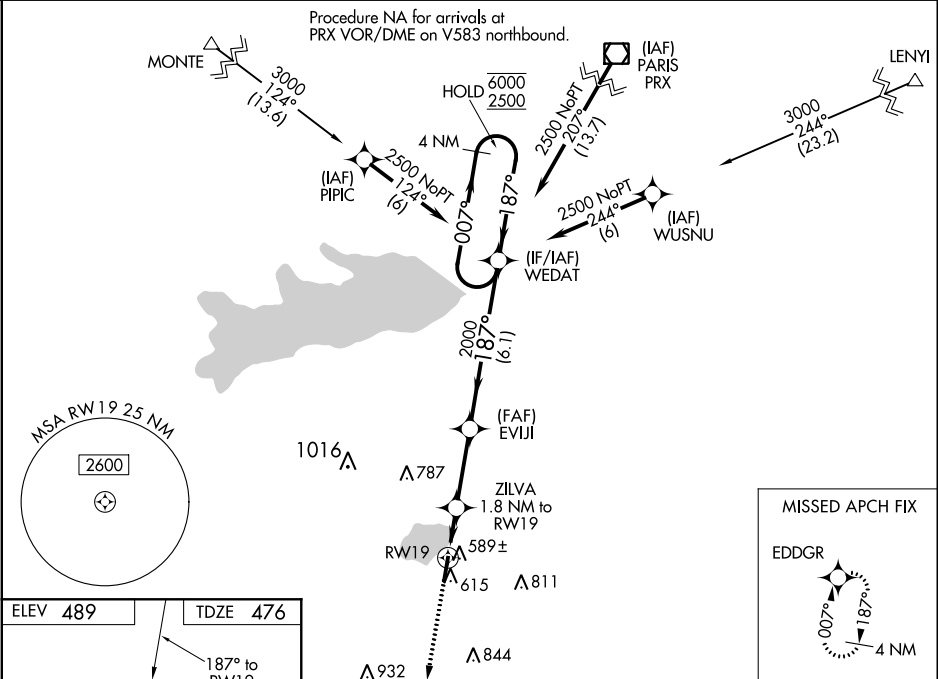
▼

▲

Circling NA east of Rwy 1-19. For uncompensated Baro-VNAV systems, LNAV/VNAV NA below -15°C or above 54°C.

MISSED APPROACH: Climb to 3000 direct EDDGR and hold.

AWOS-3 118.35	FORT WORTH CENTER 132.025 360.75	UNICOM 123.075 (CTAF) 0
------------------	-------------------------------------	----------------------------



RWY 19

REIL Rwy 1 and 19  
MIRL Rwy 1-19

\*LNAV only

CATEGORY	A	B	C	D
LPV DA	726-¾	250 (300-¾)		NA
LNAV/VNAV DA	776-1	300 (300-1)		NA
LNAV MDA	840-1	364 (400-1)		NA
<b>C</b> CIRCLING	940-1	451 (500-1)	1000-1½ 511 (600-1½)	NA