

WAAS CH 66020 W36A	APP CRS 357°	Rwy Idg TDZE 629 Apt Elev 642
--	------------------------	---

RNAV (GPS) RWY 36

DENTON ENTERPRISE (D'TO)

RNP APCH.

▼

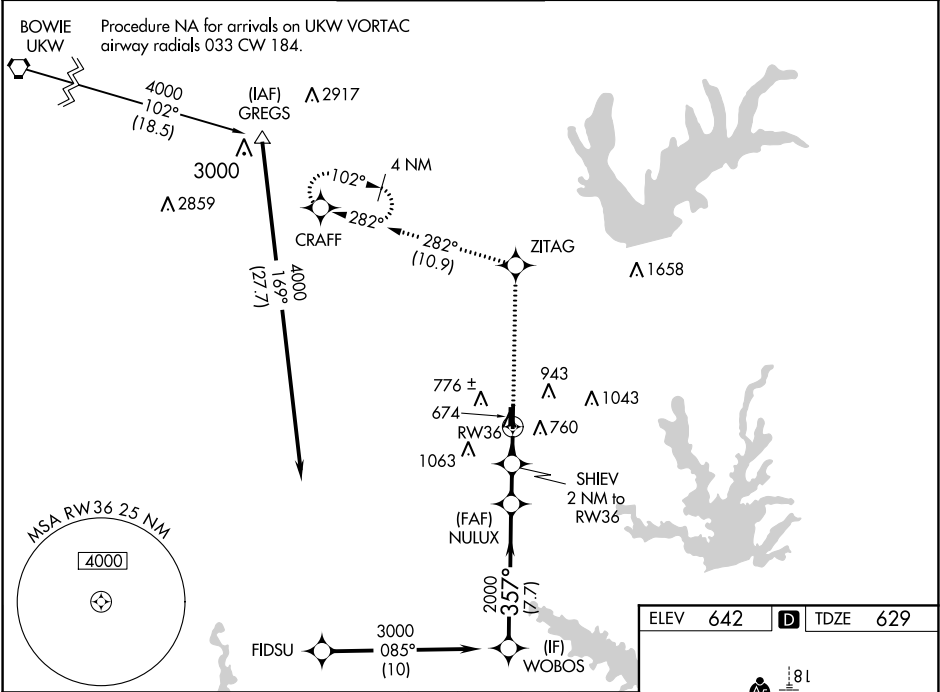
⚠

For uncompensated Baro-VNAV systems, LNAV/VNAV NA below -16°C or above 54°C.

When local altimeter setting not received, use Fort Worth Alliance altimeter setting and increase all DA 44 feet and all MDA 60 feet. Increase LNAV/VNAV all Cats and Circling Cat D visibility ¼ mile. Baro-VNAV and VDP NA when using Fort Worth Alliance altimeter setting.

MISSED APPROACH:
Climb to 4000 direct
ZITAG and on track 282°
to CRAFT and hold.

ASOS 119.325	REGIONAL APP CON 118.1 306.95	DENTON TOWER * 119.95 (CTAF) 0	GND CON 123.95	CLNC DEL 123.95	UNICOM 122.95
------------------------	---	---	--------------------------	---------------------------	-------------------------



WOBOB

3000

GP 3.00° TCH 50

357°

2000

NULUX

2000

1300

7.7 NM

2.2 NM

1.2 NM

0.8 NM

SHIEV 2 NM to RW36

* 0.8 NM to RW36

RW36

*LNAV only

4000

ZITAG

tr 282°

CRAFT

CATEGORY	A	B	C	D
LPV DA		840-¾	200 (200-¾)	
LNAV/VNAV DA		890-¾	250 (300-¾)	
LNAV MDA		940-1	300 (300-1)	
CIRCLING	1160-1	518 (600-1)	1160-1½ 518 (600-1½)	1260-2 618 (700-2)

ELEV 642 D TDZE 629

81

Δ 1

5003 X 75

7002 X 150

35

36

357° to RW36

TWR 702

MIRL Rwy 18-36

SC-2, 03 DEC 2020 to 31 DEC 2020

SC-2, 03 DEC 2020 to 31 DEC 2020