

WAAS CH 42505 W31A	APP CRS 314°	Rwy Idg 6500 TDZE 487 Apt Elev 501
--	------------------------	---

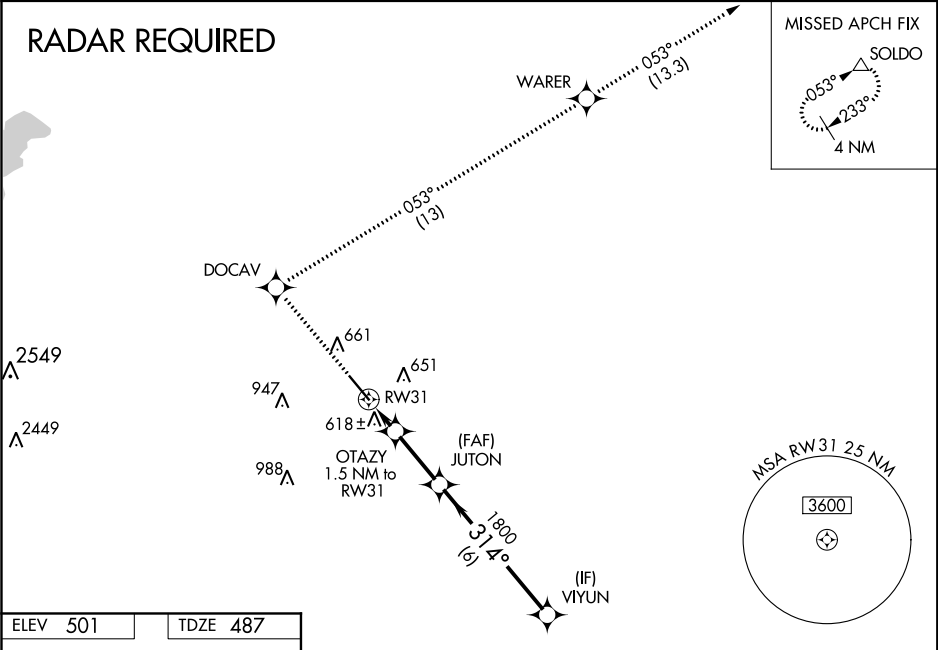
RNAV (GPS) RWY 31
LANCASTER RGNL (LNC)

For uncompensated Baro-VNAV systems, LNAV/VNAV NA below -16°C (4°F) or above 47°C (116°F). DME/DME RNP-0.3 NA. Baro-VNAV NA when using Dallas Executive altimeter setting. When local altimeter setting not received, use Dallas Executive altimeter setting and increase all DA 45 feet and all MDA 60 feet; increase LNAV/VNAV all Cats and LNAV Cat C and D visibility ¼ mile.

MISSED APPROACH: Climb to 2000 direct DOCAV and right turn on track 053° to WARER then climb to 3000 on track 053° to SOLD0 and hold.

AWOS-3 118,975	REGIONAL APP CON 125.2 343.65	GCO 121,725	UNICOM 122.7 (CTAF) 0
--------------------------	---	-----------------------	---------------------------------

RADAR REQUIRED



ELEV 501	TDZE 487
-----------------	-----------------

		2000 DOCAV	WARER	3000 SOLD0	VIYUN
* LNAV only		OTAZY 1.5 NM to RW31	JUTON		
RW31		1800	1800	2700	
1.5 NM		2.5 NM	6 NM		
CATEGORY	A	B	C	D	
LPV DA	687-¾ 200 (200-¾)				
LNAV/VNAV DA	925-1½ 438 (500-1½)				
LNAV MDA	880-1 393 (400-1)			880-1¼ 393 (400-1¼)	
CIRCLING	980-1 479 (500-1)		980-1½ 479 (500-1½)		1060-2 559 (600-2)