

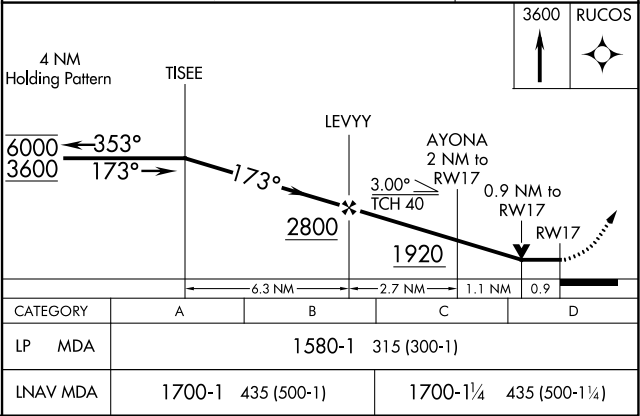
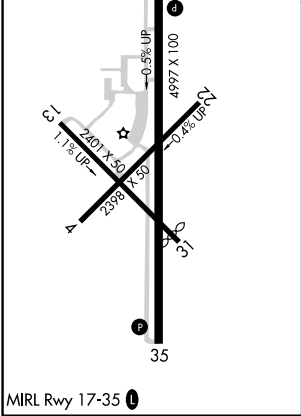
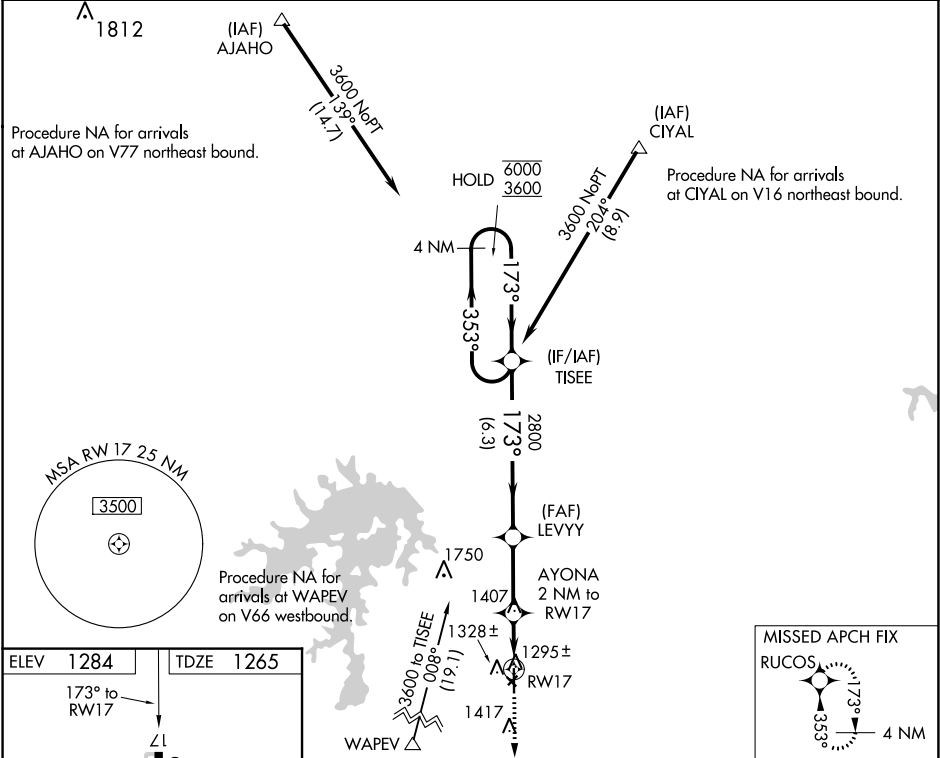
WAAS CH 65828 W17A	APP CRS 173°	Rwy Idg TDZE Apt Elev	4997 1265 1284
--	------------------------	-----------------------------	---

RNAV (GPS) RWY 17

STEPHENS COUNTY (BKD)

RNP APCH.	MISSED APPROACH: Climb to 3600 direct RUCOS and hold.
⚠ Rwy 17 helicopter visibility reduction below ¾ SM NA.	

AWOS-3 120.175	FORT WORTH CENTER 127.0 360.6	UNICOM 122.8 (CTAF) 0
--------------------------	---	---------------------------------



SC-2, 03 DEC 2020 to 31 DEC 2020

SC-2, 03 DEC 2020 to 31 DEC 2020