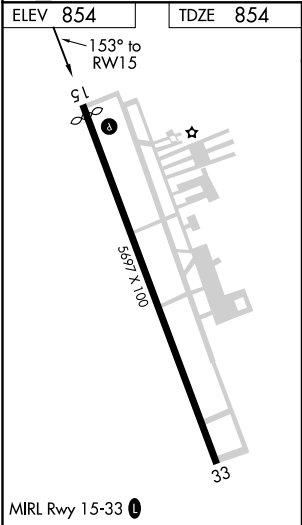
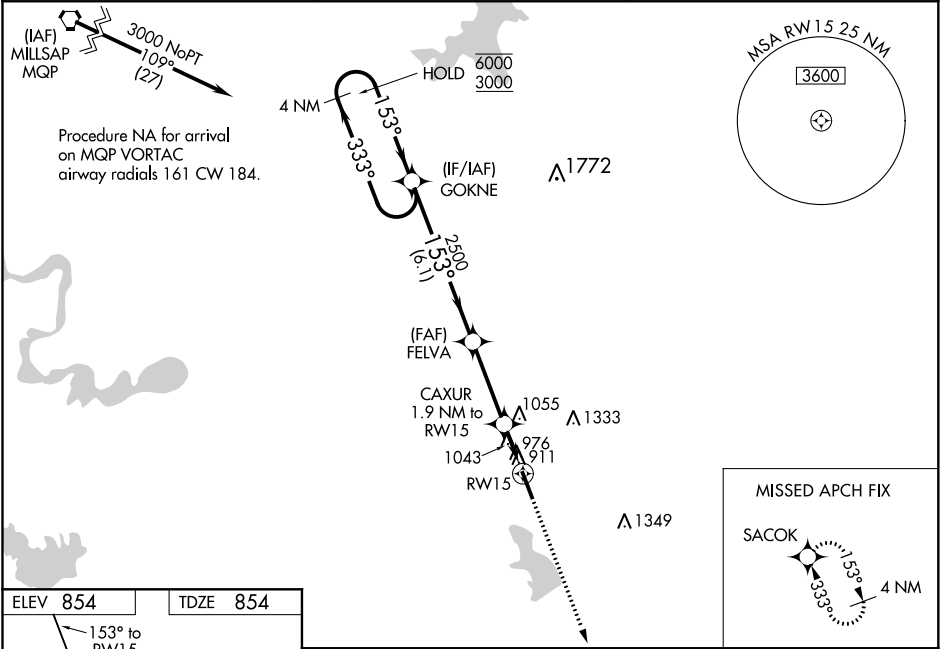


WAAS CH <b>61331</b> <b>W15A</b>	APP CRS <b>153°</b>	Rwy Idg TDZE Apt Elev	<b>5512</b> <b>854</b> <b>854</b>
--	------------------------	-----------------------------	---

RNAV (GPS) RWY 15  
CLEBURNE RGNL (CPT)

RNP APCH.	MISSED APPROACH: Climb to 3000 direct SACOK and hold.
▼ For uncompensated Baro-VNAV systems, LNAV/VNAV NA below -16°C or above 54°C. Rwy 15 helicopter visibility reduction below ¾ SM NA. ▲	

AWOS-3 <b>119.525</b>	REGIONAL APP CON <b>135.975 379.9</b>	UNICOM <b>122.8 (CTAF) 0</b>
--------------------------	--	---------------------------------



4 NM Holding Pattern		GOKNE	FELVA	CAXUR	SACOK
6000 ← 333°		153° →	2500	1.9 NM to RW15	3000
GP 3.00° TCH 39		2500	*1480	RW15	
		6.1 NM	3.2 NM	1.9 NM	
CATEGORY	A	B	C	D	
LPV DA	1240-1⅓		386 (400-1⅓)		
LNAV/VNAV DA	1397-1⅞		543 (600-1⅞)		
LNAV MDA	1360-1	506 (600-1)		1360-1⅓	506 (600-1⅓)
CIRCLING	1400-1	546 (600-1)		1680-2½ 826 (900-2½)	1700-2¾ 846 (900-2¾)

SC-2, 03 DEC 2020 to 31 DEC 2020

SC-2, 03 DEC 2020 to 31 DEC 2020