

SNYDER, TEXAS

AL-6013 (FAA)

20198

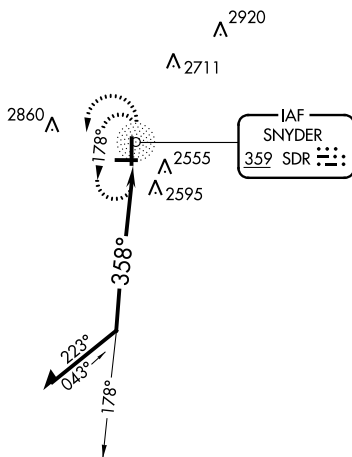
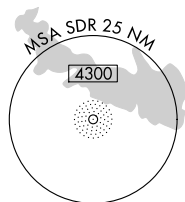
NDB SDR <b><u>359</u></b>	APP CRS <b>358°</b>	Rwy Idg TDZE Apt Elev	<b>5599</b> <b>2426</b> <b>2430</b>
------------------------------	------------------------	-----------------------------	---

**NDB RWY 35**  
WINSTON FIELD (SNK)

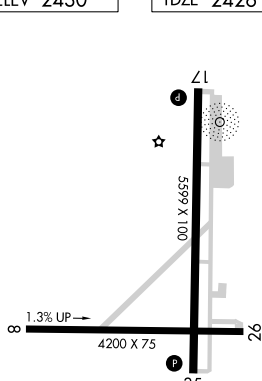
**T** **A** NA Circling NA to Rwy 8-26. When VGSI inop, Circling Rwy 17 NA at night.

**MISSED APPROACH:** Climbing left turn to 4100 in SDR NDB holding pattern.

AWOS-3 <b>119.925</b>	FORT WORTH CENTER <b>127.45 290.3</b>	UNICOM <b>122.8 (CTAF) 0</b>
--------------------------	--	---------------------------------

3201  $\Delta$ 

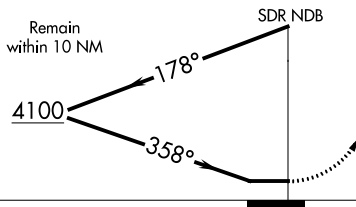
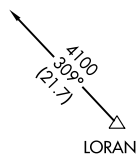
ELEV 2430		TDZE 2426
-----------	--	-----------



REIL Rwys 17 and 35

MIRL Rwy 17-35 **L**

SDR NDB



4100	SDR
------	-----

CATEGORY	A	B	C	D
S-35	2960-1	534 (600-1)	2960-1½ 534 (600-1½)	NA
CIRCLING	2960-1	530 (600-1)	2960-1½ 530 (600-1½)	NA

SNYDER, TEXAS

Amdt 2B 28JUN12

32°42'N-100°57'W

WINSTON FIELD (SNK)  
NDB RWY 35

SC-2, 03 DEC 2020 to 31 DEC 2020