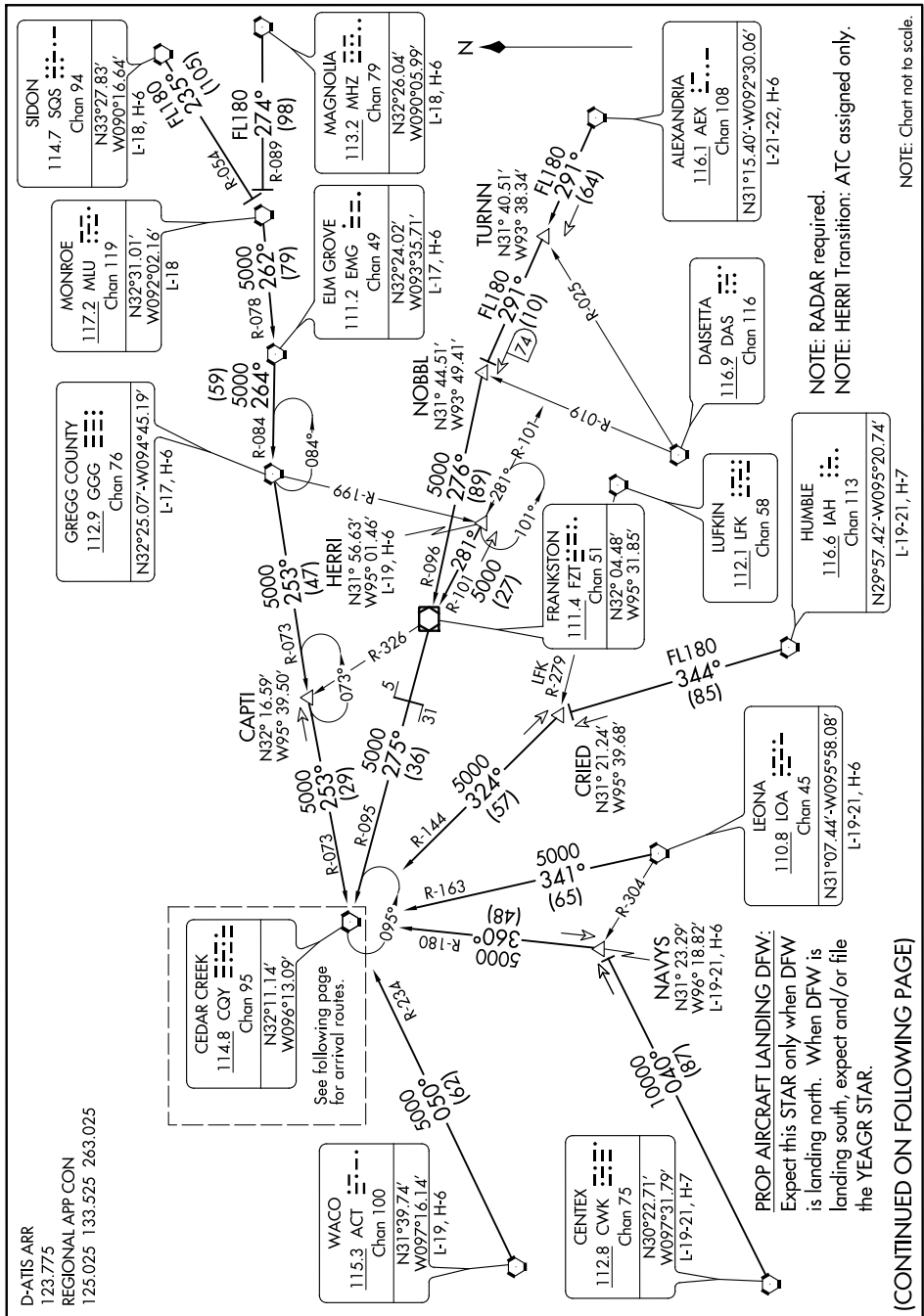


## Transition Routes

DALLAS-FORT WORTH, TEXAS



(CONTINUED ON FOLLOWING PAGE)

SC-2, 03 DEC 2020 to 31 DEC 2020

NOTE: Chart not to scale.

NOTE: RADAR required.  
NOTE: HERRI Transition:

DALLAS-FORT WORTH, TEXAS

DALLAS-FORT WORTH INTL (DFW)

## CEDAR CREEK ONE ARRIVAL

## Transition Routes

(CQY.CQY1) 21MAY20

SC-2, 03 DEC 2020 to 31 DEC 2020

D-ATIS ARR

123 775

REGIONAL APP CON

125.025 133.525 263.025