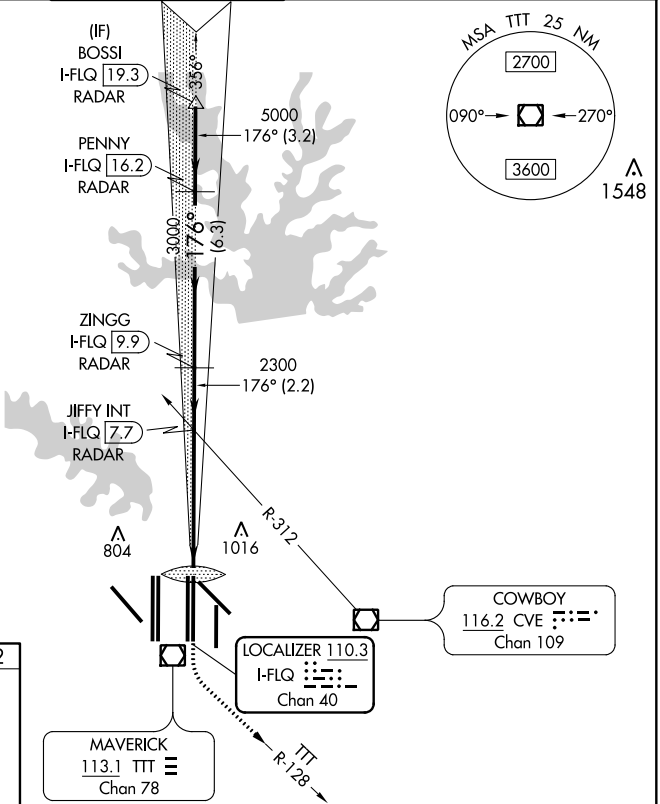
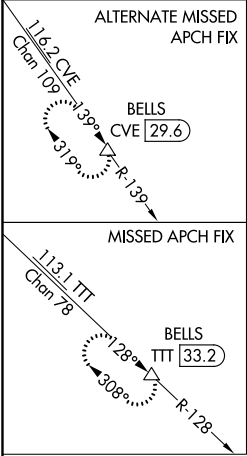


LOC/DME I-FLQ	APP CRS	Rwy Idg	13400
110.3	176°	TDZE	562
Chan 40		Apt Elev	607

CONVERGING ILS RWY 17C

DALLAS-FORT WORTH INTL (DFW)

DME or RADAR required. Simultaneous approach authorized with Converging ILS Rwy 13R.		ALSF-2		MISSED APPROACH: Climb to 1300 then climbing left turn to 3000 on TTT VOR/DME R-128 to BELLS/TTT 33.2 DME and hold.	
D-ATIS	REGIONAL APP CON	DFW TOWER	GND CON	CLNC DEL	CPDLC
ARR 123.775	127.075	126.55 127.5 EAST	121.65 121.8 EAST	128.25	
DEP 135.925		124.15 134.9 WEST	121.85 WEST		



RADAR REQUIRED

