
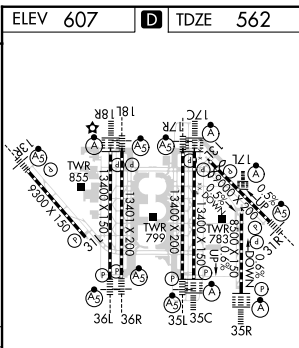
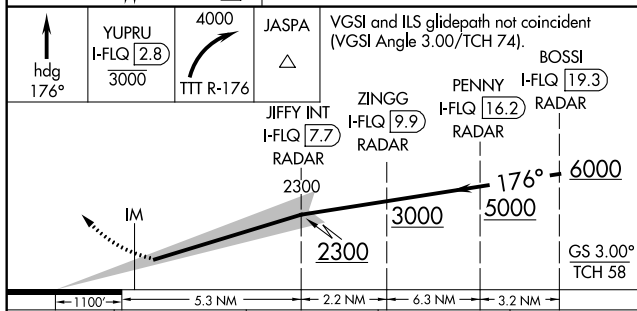
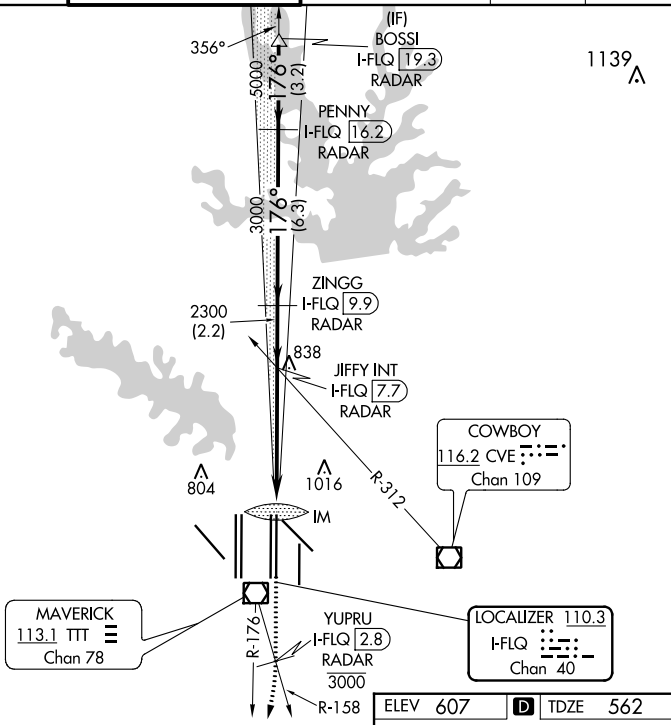
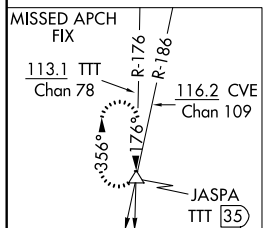
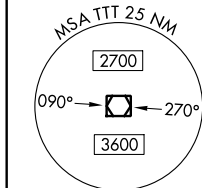
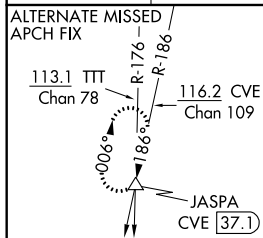


LOC/DME I-FLQ <u>110.3</u> Chan 40	APP CRS 176°	Rwy Idg 13400 TDZE 562 Apt Elev 607
--	------------------------	--

ILS RWY 17C (SA CAT I)
DALLAS-FORT WORTH INTL (DFW)

DME and RADAR required.		ALS-F-2		MISSED APPROACH: Climb on heading 176° to cross YUPRU/2.8 DME/RADAR at or below 3000, then climbing right turn to 4000 on TTT VOR/DME R-176 to JASPA/TTT 35 DME and hold.	
V	Simultaneous approach authorized with Rwy 17L, 18L/R. Requires specific OPSPEC, MSPEC, or LOA approval and use of HUD to DA.				
	D-ATIS ARR 123.775 DEP 135.925	REGIONAL APP CON 127.075	DFW TOWER 126.55 127.5 EAST 124.15 134.9 WEST		GND CON 121.65 121.8 EAST 121.85 WEST
				CLNC DEL 128.25	CPDLC



SA CATEGORY I ILS - SPECIAL AIRCREW
& AIRCRAFT CERTIFICATION REQUIRED

HIRL all Rwys
REIL Rwys 13L and 31L
TDZ/CL all Rwys except 13L and 31L