

ILS RWY 17L (CAT II & III)
DALLAS-FORT WORTH INTL (DFW)


ALSF-2

MISSED APPROACH: Climb to 1020 then climbing left turn to 3000 on heading 151° and TTT VOR/DME R-127 to TACKE/TTT 26.5 DME and hold.

Diagram illustrating an alternate missed approach fix. The diagram shows a path with a turn. Key labels include:

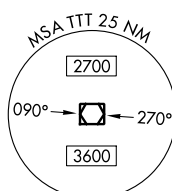
- ALTERNATE MISSED APCH FIX
- TACKE
- FUZ 32.7
- 115.7 FUZ Chan 104
- R-120

RANGER
115.7 FUZ :::::
Chan 104

MAVERICK
113.1 TTT 
Chan 78

LOCALIZER 111.75
I-PPZ
Chan 54(Y)

RADAR REQUIRED



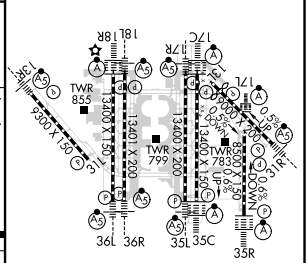
The diagram illustrates the approach profile for runway 07. Key features include:

- Navigation Aids:** RIVET (I-PPZ 19.6), DRAAK (I-PPZ 16.4), INWOD (I-PPZ 10.1), and GBUSH (I-PPZ 7) are marked along the horizontal axis.
- Altitudes:** The profile shows altitudes of 5000, 3000, and 2300 feet. A minimum altitude of 638 feet is indicated near the runway.
- Distances:** Horizontal distances are marked as 3.2 NM, 6.3 NM, 3.1 NM, and 5.4 NM.
- Angles:** A 176° angle is shown at the 5000-foot altitude, and a 3.00° glide slope (TCH 56) is indicated.
- Visual Aids:** A VASI (Visual Approach Slope Indicator) is shown with a 3.00° angle and a TCH (Threshold Crossing Height) of 56 feet.
- Other Information:** A note states "VGSi and ILS glidepath not coincident (VGSi Angle 3.00/TCH 77)". A "TACKLE" symbol is also present.

CATEGORY	A	B	C	D
S-ILS 17L	CAT II RA 122/12 100 DA 645			
S-ILS 17L	CAT IIIa RVR 07			
S-ILS 17L	CAT IIIb RVR 06			
S-ILS 17L	CAT IIIc NA			

CATEGORY II & III ILS - SPECIAL AIRCREW
& AIRCRAFT CERTIFICATION REQUIRED

ELEV 607	D	TDZE 545
----------	----------	----------



HIRL all Rwy's
REIL Rwy's 13L and 31L
TDZ/CL all Rwy's except 13L and 31L