
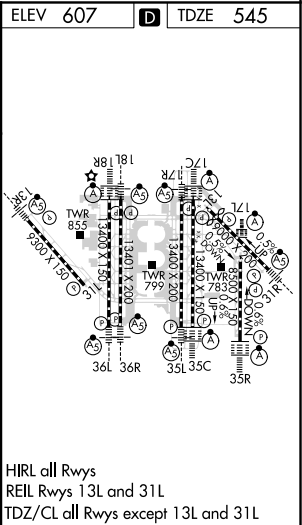
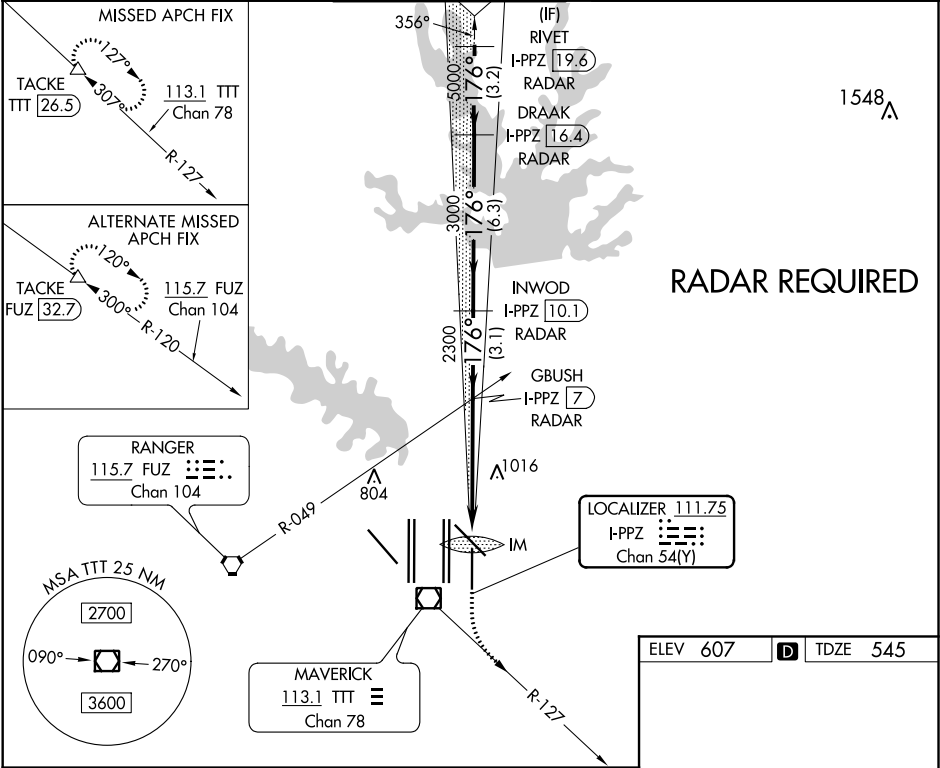


LOC/DME I-PPZ 111.75 Chan 54 (Y)	APP CRS 176°	Rwy Idg TDZE Apt Elev 8500 545 607
--	------------------------	--

ILS RWY 17L (SA CAT I)
DALLAS-FORT WORTH INTL (DFW)

Simultaneous approach authorized with Rwy 17C/R and Rwy 18L/R. DME required. Requires specific OPSPEC, MSPEC, or LOA approval and use of HUD to DA.		ALSF-2 		MISSED APPROACH: Climb to 1020 then climbing left turn to 3000 on heading 151° and TTT VOR/DME R-127 to TACKE/TTT 26.5 DME and hold.			
D-ATIS ARR 123.775 DEP 135.925	REGIONAL APP CON 119.4	DFW TOWER 126.55 127.5 EAST 124.15 134.9 WEST		GND CON 121.65 121.8 EAST 121.85 WEST		CLNC DEL 128.25	CPDLC



VGSI and ILS glidepath not coincident (VGSI Angle 3.00°/TCH 77°).			
RIVET I-PPZ 19.6 RADAR	DRAAK I-PPZ 16.4 RADAR	INWOD I-PPZ 10.1 RADAR	GBUSH I-PPZ 7 RADAR
5000	176°	5000	3000
GS 3.00° TCH 56		2300	880'
3.2 NM 6.3 NM 3.1 NM 5.4 NM			
CATEGORY	A	B	C
S-ILS 17L	RA 165/14 150 DA 695		
SA CATEGORY I ILS - SPECIAL AIRCREW & AIRCRAFT CERTIFICATION REQUIRED			

SC-2, 03 DEC 2020 to 31 DEC 2020

SC-2, 03 DEC 2020 to 31 DEC 2020