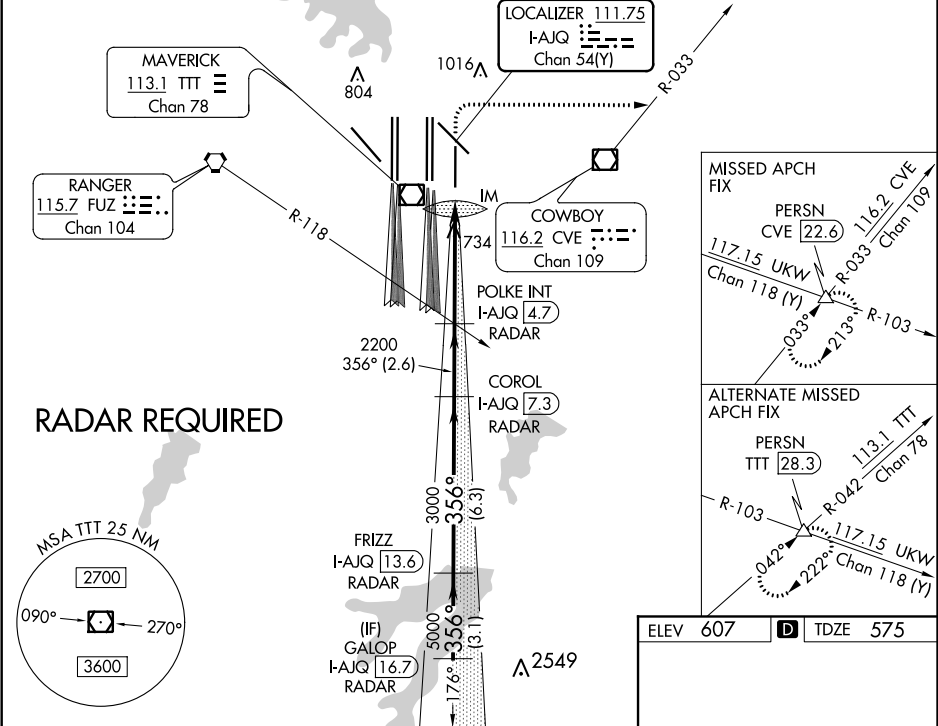


LOC/DME I-AJQ 111.75 Chan 54 (Y)	APP CRS 356°	Rwy Idg TDZE 575 Apt Elev 607	ILS RWY 35R (CAT II & III) DALLAS-FORT WORTH INTL (DFW)	
--	------------------------	---	---	--

Simultaneous approach authorized with Rwy 36L/R and Rwy 35L/C. DME required.		ALSF-2 	MISSED APPROACH: Climb to 1040 then climbing right turn to 3000 on heading 090° and CVE VOR/DME R-033 to PERSN/CVE 22.6 DME and hold.	
---	--	------------	---	--

D-ATIS ARR 123.775 DEP 135.925	REGIONAL APP CON 119.4	DFW TOWER 126.55 127.5 EAST 124.15 134.9 WEST	GND CON 121.65 121.8 EAST 121.85 WEST	CLNC DEL 128.25	CPDLC
--	----------------------------------	---	---	---------------------------	-------



GALOP I-AJQ 16.7 RADAR 5000		FRIZZ I-AJQ 13.6 RADAR 3000		COROL I-AJQ 7.3 RADAR 2200		POLKE INT I-AJQ 4.7 RADAR 2200		1040 3000 hdg 090° I-AJQ DME ANTENNA IM 671		CVE R-033 PERSN Δ	
GS 3.00° TCH 58		5000		3000		2200					
VGS and ILS glidepath not coincident (VGS Angle 3.00/TCH 73).											
3.1 NM		6.3 NM		2.6 NM		4.9 NM		1375'			
CATEGORY		A		B		C		D			
S-ILS 35R				CAT II		RA 94/12		100 DA 675			
S-ILS 35R				CAT IIIa		RVR 07					
S-ILS 35R				CAT IIIb		RVR 06					
S-ILS 35R				CAT IIIc		NA					

CATEGORY II & III ILS - SPECIAL AIRCREW & AIRCRAFT CERTIFICATION REQUIRED		HIRL all Rwys REIL Rwys 13L and 31L TDZ/CL all Rwys except 13L, and 31L
--	--	---