

LOC/DME I-LWN

109.5

Chan 32

APP CRS

135°

Rwy Idg

9300

TDZE

591

Apt Elev

607

ILS or LOC RWY 13R

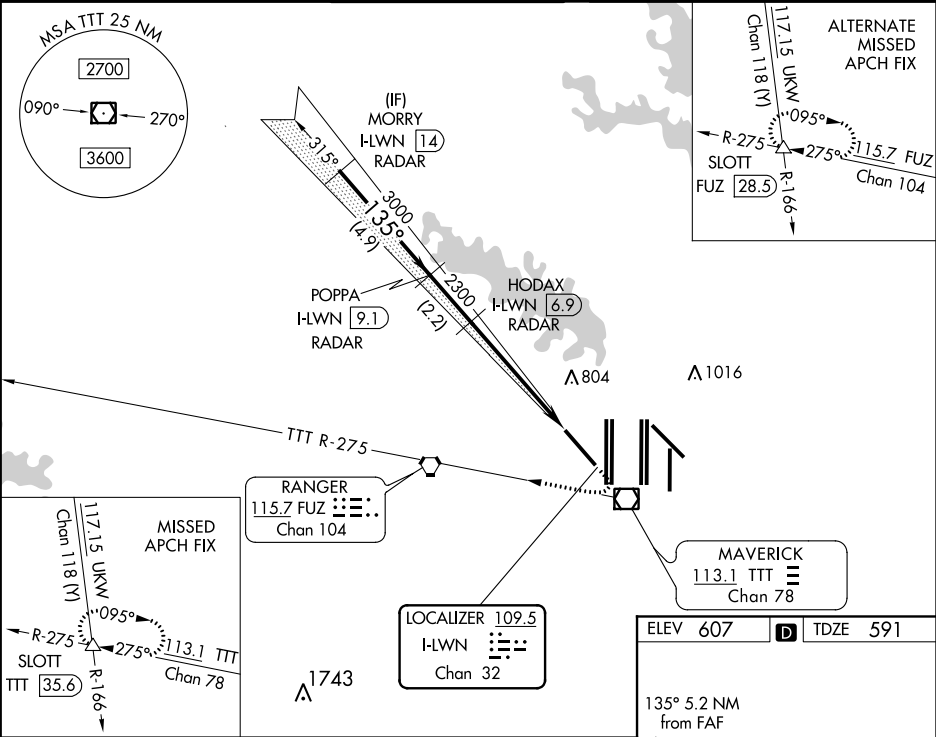
DALLAS-FORT WORTH INTL (DFW)

RADAR required for procedure entry.
DME or RADAR required for LOC only.

MALSR

MISSED APPROACH: Climb to 1560 then climbing right turn to 3000 on heading 230° and TTT VOR/DME R-275 to SLOTT INT/TTT 35.6 DME and hold.

| | | | | | |
|----------------------------|------------------|--|----------------------------------|----------|-------|
| D-ATIS | REGIONAL APP CON | DFW TOWER | GND CON | CLNC DEL | CPDLC |
| ARR 123.775 DEP 135.925 | 133.15 118.1 | 126.55 127.5 EAST 124.15 134.9 WEST | 121.65 121.8 EAST 121.85 WEST | 128.25 | |



VGSI and ILS glidepath not coincident (VGSI Angle 3.00/TCH 71).

1560

3000

TTT R-275

SLOTT

MORRY I-LWN 14 RADAR

POPPA I-LWN 9.1 RADAR

HODAX I-LWN 6.9 RADAR

3000

135°

3000

2300

GS 3.00° TCH 55

4.9 NM

2.2 NM

5.2 NM

| CATEGORY | A | B | C | D |
|-----------|---------|-------------|-----------|----------------|
| S-ILS 13R | 791/18 | 200 (200-½) | | |
| S-LOC 13R | 1240/24 | 649 (700-½) | 1240-13⁄8 | 649 (700-13⁄8) |

ELEV 607 TDZE 591

135° 5.2 NM from FAF

HIRL all Rwy's

REIL Rwy's 13L and 31L

TDZ/CL all Rwy's except 13L, and 31L

FAF to MAP 5.2 NM

| | | | | | |
|---------|------|------|------|------|------|
| Knots | 60 | 90 | 120 | 150 | 180 |
| Min:Sec | 5:12 | 3:28 | 2:36 | 2:05 | 1:44 |

DALLAS-FORT WORTH, TEXAS

Amdt 9B 15AUG19

32°54'N-97°02'W

DALLAS-FORT WORTH INTL (DFW)

ILS or LOC RWY 13R