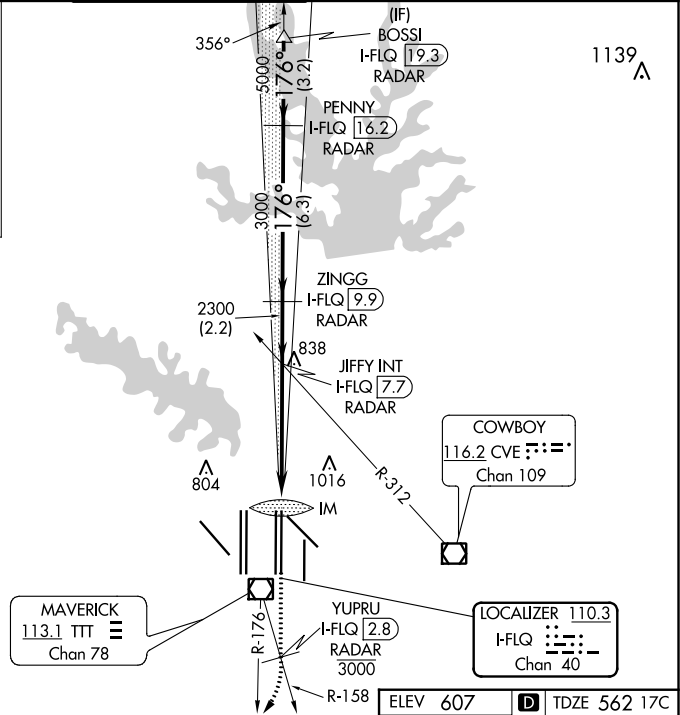
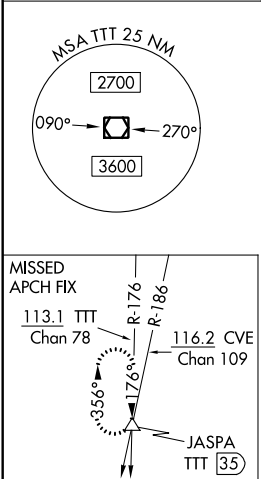
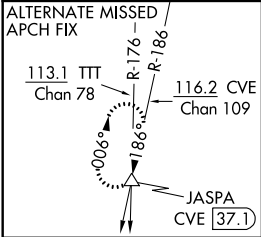





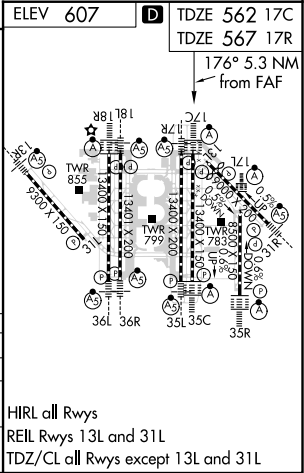
LOC/DME I-FLQ 110.3 Chan 40	APP CRS 176°	Rwy 17C Idg 13400 TDZE 562 Apt Elev 607	Rwy 17R Idg 13400 TDZE 567 Apt Elev 607
---	------------------------	--	--

ILS or LOC RWY 17C
DALLAS-FORT WORTH INTL (DFW)

DME and RADAR required. Simultaneous approach authorized with Rwy 17L, 18L/R. Inop table does not apply to sidestep 17R Cats A and B.		Rwy 17C ALSF-2 	Rwy 17R MALSR 	MISSED APPROACH: Climb on heading 176° to cross YUPRU/2.8 DME/RADAR at or below 3000, then climbing right turn to 4000 on TTT VOR/DME R-176 to JASPA/TTT 35 DME and hold.	
D-ATIS ARR 123.775 DEP 135.925	REGIONAL APP CON 127.075	DFW TOWER 126.55 127.5 EAST 124.15 134.9 WEST		GND CON 121.65 121.8 EAST 121.85 WEST	CLNC DEL 128.25
				CPDLC	



 hdg 176°	YUPRU I-FLQ 2.8 3000	4000  TTT R-176	JASPA 	VGSI and ILS glidepath not coincident (VGSI Angle 3.00/TCH 74).	
*LOC only.				BOSSI I-FLQ 19.3	
				ZINGG I-FLQ 9.9 RADAR	PENNY I-FLQ 16.2 RADAR
				JIFFY INT I-FLQ 7.7 RADAR	RADAR
				RADAR	
				RADAR	
				RADAR	
				RADAR	
				RADAR	
				RADAR	
				RADAR	
				RADAR	
				RADAR	
				RADAR	
				RADAR	
				RADAR	
				RADAR	
				RADAR	
				RADAR	
				RADAR	
				RADAR	
				RADAR	
				RADAR	
				RADAR	
				RADAR	
				RADAR	
				RADAR	
				RADAR	
				RADAR	
				RADAR	
				RADAR	
				RADAR	
				RADAR	
				RADAR	
				RADAR	
				RADAR	
				RADAR	
				RADAR	
				RADAR	
				RADAR	
				RADAR	
				RADAR	
				RADAR	
				RADAR	
				RADAR	
				RADAR	
				RADAR	
				RADAR	
				RADAR	
				RADAR	
				RADAR	
				RADAR	
				RADAR	
				RADAR	
				RADAR	
				RADAR	
				RADAR	
				RADAR	
				RADAR	
				RADAR	
				RADAR	
				RADAR	
				RADAR	
				RADAR	
				RADAR	
				RADAR	
				RADAR	
				RADAR	
				RADAR	
				RADAR	
				RADAR	
				RADAR	
				RADAR	
				RADAR	
				RADAR	
				RADAR	
				RADAR	
				RADAR	
				RADAR	
				RADAR	
				RADAR	
				RADAR	
				RADAR	
				RADAR	
				RADAR	
				RADAR	
				RADAR	
				RADAR	
				RADAR	
				RADAR	
				RADAR	
				RADAR	
				RADAR	
				RADAR	
				RADAR	
				RADAR	
				RADAR	
				RADAR	
				RADAR	
				RADAR	
				RADAR	
				RADAR	
				RADAR	
				RADAR	
				RADAR	
				RADAR	
				RADAR	
				RADAR	
				RADAR	
				RADAR	
				RADAR	
				RADAR	
				RADAR	
				RADAR	
				RADAR	
				RADAR	
				RADAR	
				RADAR	
				RADAR	
				RADAR	
				RADAR	
				RADAR	
				RADAR	
				RADAR	
				RADAR	
				RADAR	
				RADAR	
				RADAR	
				RADAR	
				RADAR	
				RADAR	
				RADAR	
				RADAR	
				RADAR	
				RADAR	
				RADAR	
				RADAR	
				RADAR	
				RADAR	
				RADAR	
				RADAR	
				RADAR	
				RADAR	
				RADAR	
				RADAR	
				RADAR	
				RADAR	
				RADAR	
				RADAR	
				RADAR	
				RADAR	
				RADAR	
				RADAR	
				RADAR	
				RADAR	
				RADAR	
				RADAR	
				RADAR	
				RADAR	
				RADAR	
				RADAR	
				RADAR	
				RADAR	
				RADAR	
				RADAR	
				RADAR	
				RADAR	
				RADAR	
				RADAR	
				RADAR	
				RADAR	
				RADAR	
				RADAR	
				RADAR	
				RADAR	
				RADAR	
				RADAR	
				RADAR	
				RADAR	
				RADAR	
				RADAR	
				RADAR	
				RADAR	
				RADAR	
				RADAR	
				RADAR	
				RADAR	
				RADAR	
				RADAR	
				RADAR	
				RADAR	
				RADAR	
				RADAR	
				RADAR	
				RADAR	
				RADAR	
				RADAR	
				RADAR	
				RADAR	
				RADAR	
				RADAR	
				RADAR	
				RADAR	
				RADAR	
				RADAR	
				RADAR	
				RADAR	
				RADAR	
				RADAR	
				RADAR	
				RADAR	
				RADAR	
				RADAR	
				RADAR	
				RADAR	
				RADAR	
				RADAR	
				RADAR	
				RADAR	
				RADAR	
				RADAR	
				RADAR	
				RADAR	
				RADAR	
				RADAR	
				RADAR	
				RADAR	
				RADAR	
				RADAR	
				RADAR	
				RADAR	
				RADAR	
				RADAR	
				RADAR	
				RADAR	
				RADAR	
				RADAR	
				RADAR	
				RADAR	
				RADAR	
				RADAR	
				RADAR	
				RADAR	
				RADAR	
				RADAR	
				RADAR	
				RADAR	
				RADAR	
				RADAR	
				RADAR	
				RADAR	
				RADAR	
				RADAR	
				RADAR	
				RADAR	
				RADAR	
				RADAR	
				RADAR	
				RADAR	
				RADAR	
				RADAR	
				RADAR	
				RADAR	
				RADAR	
				RADAR	
				RAD	



SC-2, 03 DEC 2020 to 31 DEC 2020

SC-2, 03 DEC 2020 to 31 DEC 2020