

ILS or LOC RWY 17R
DALLAS-FORT WORTH INTL (DFW)

MISSED APPROACH: Climb on heading 176° to cross EYWEP/RADAR at or below 3000, then climbing right turn to 4000 on TTT VOR/DME R-176 to JASPA/TTT 35 DME and hold.

T Simultaneous approach authorized with Rwy 17L, 18L/R.

MISSED APCH FIX

356°

R-176

R-186

JASPA TTT 35

116.2 CVE Chan 109

113.1 TTT Chan 78

ALTERNATE MISSED APCH FIX

186°

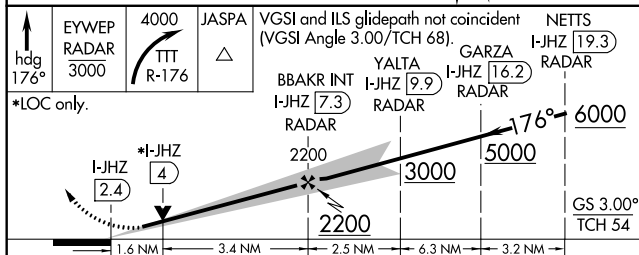
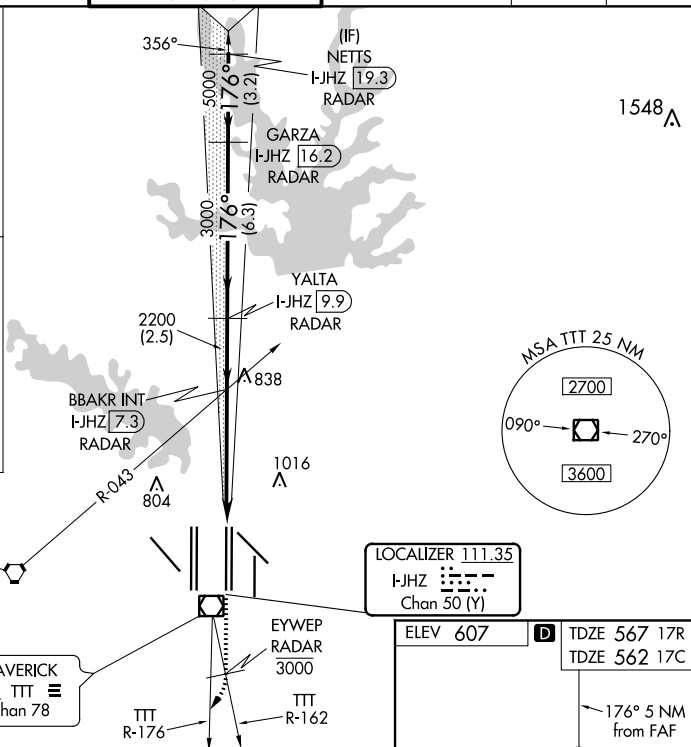
R-176

R-186

JASPA CVE 37.1

116.2 CVE Chan 109

113.1 TTT Chan 78



HIRL all Rwys

REIL Rwys 13L and 31L

TDZ/CL all Rwys except 13L and 31L

SC-2, 03 DEC 2020 to 31 DEC 2020