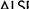

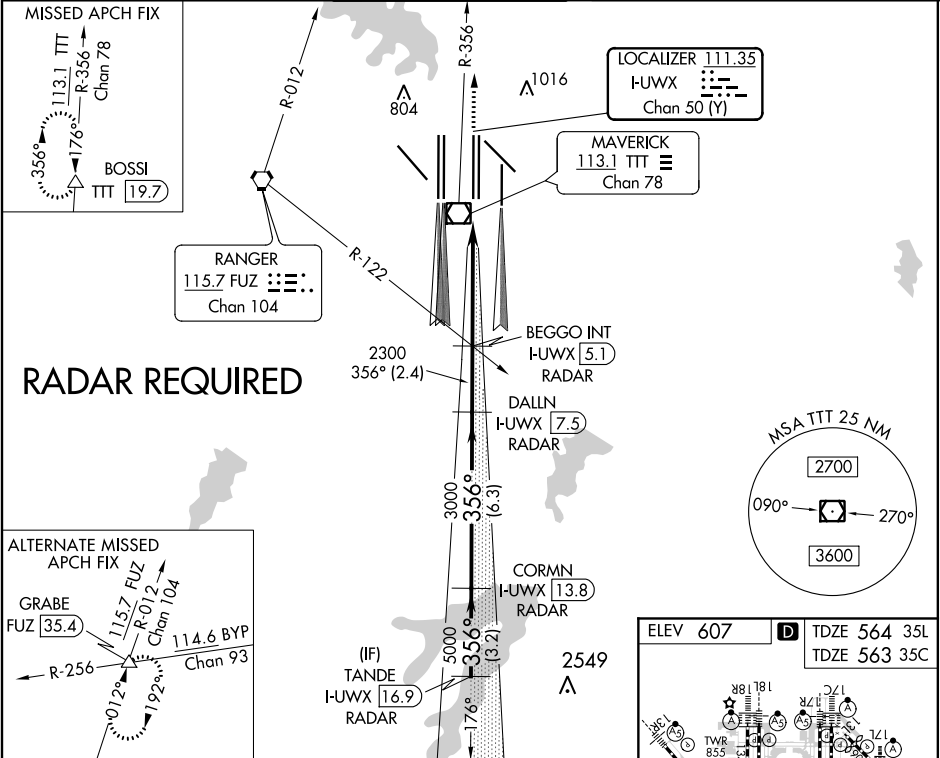


LOC/DME I-UWX 111.35 Chan 50 (Y)	APP CRS 356°	Rwy 35L Idg 13400 TDZE 564 Apt Elev 607	Rwy 35C Idg 13400 TDZE 563 Apt Elev 607
--	------------------------	--	--

ILS or LOC RWY 35L

DALLAS-FORT WORTH INTL (DFW)

V	DME or RADAR required. Simultaneous approach authorized with Rwy 36 L/R and Rwy 35R. Inop table does not apply to Sidestep Rwy 35C.		Rwy 35L MALSR	Rwy 35C ALSF-2	MISSED APPROACH: Climb to 2000 then climb to 3000 on TTT VOR/DME R-356 to BOSSI/TTT 19.7 DME and hold.			
								
D-ATIS		REGIONAL APP CON	DFW TOWER		GND CON		CLNC DEL	CPDLC
ARR	123.775	127.075	126.55	127.5 EAST	121.65	121.8 EAST	128.25	
DEP	135.925		124.15	134.9 WEST	121.85	WEST		



VGSI and ILS glidepath not coincident (VGSI Angle 3.00/TCH 63).				BOSSI △
TANDE I-UWX 16.9 RADAR	CORMN I-UWX 13.8 RADAR	DALLIN I-UWX 7.5 RADAR	BEGGO INT I-UWX 5.1 RADAR	TTT R-356
				*LOC only
CATEGORY	A	B	C	D
S-ILS 35L	764/18 200 (200-½)			
S-LOC 35L	1000/24	436 (400-½)	1000/40	436 (400-¾)
SIDESTEP 35C	1000-1	437 (400-1)	1000-1½	1000-2
		437 (400-1½)	437 (400-2)	

