

LOC/DME I-BXN 111.9 Chan 56	APP CRS 356°	Rwy 36L Idg 13400 TDZE 588 Apt Elev 607	Rwy 36R Idg 13401 TDZE 581 Apt Elev 607
---	------------------------	--	--

ILS or LOC RWY 36L

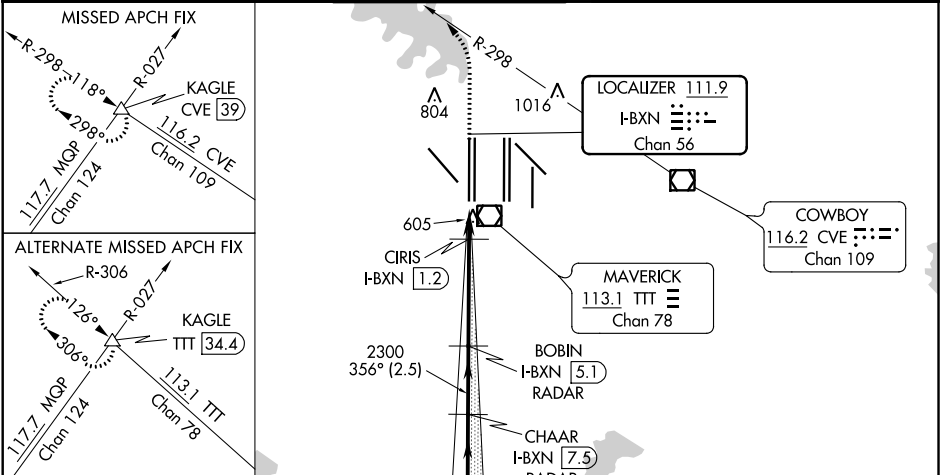
DALLAS-FORT WORTH INTL (DFW)

⚠ Inop table does not apply to Sidestep 36R. Simultaneous approach authorized with Rwy 35L/C/R. DME or RADAR required. For inop ALS, increase S-LOC 36L Cat C and D visibility to 1 3/8 SM. For inop ALS, increase CIRIS fix minimums Cat C and D visibility to RVR 4500.

Rwys 36L/R
MALSR

MISSED APPROACH: Climb to 1100 then climbing left turn to 3000 on heading 315° and CVE VOR/DME R-298 to KAGLE INT/ CVE VOR/DME 39 DME and hold.

D-ATIS ARR 123.775 DEP 135.925	REGIONAL APP CON 118.425	DFW TOWER 126.55 127.5 EAST 124.15 134.9 WEST	GND CON 121.65 121.8 EAST 121.85 WEST	CLNC DEL 128.25	CPDLC
--	------------------------------------	---	---	---------------------------	-------



RADAR REQUIRED

ELEV 607

D

TDZE 588 36L
TDZE 581 36R

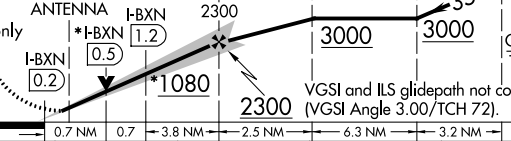
HIRL all Rwys

REIL Rwys 13L and 31L

TDZ/CL all Rwys except 13L and 31L

FAF to MAP 5.2 NM

Knots	60	90	120	150	180
Min:Sec	5:12	3:28	2:36	2:05	1:44

1100 ↑	3000 hdg 315°	CVE R-298	KAGLE △	BOBIN I-BXN [5.1] RADAR	CHAAR I-BXN [7.5] RADAR	HUTEN I-BXN [13.8] RADAR	ALLIN I-BXN [16.9] RADAR
				35°			
*LOC only				GS 3.00° TCH 55			
0.7 NM				0.7		3.8 NM	
0.7				2.5 NM		6.3 NM	
3.2 NM							
CATEGORY		A		B		C	
S-ILS 36L		788/18		200 (200-½)			
S-LOC 36L		1080/24		492 (500-½)		1080/50 492 (500-1)	
SIDESTEP 36R		1080/50		499 (500-1)		1080-1½ 499 (500-1½)	
CIRIS FIX MINIMUMS (DME required)							
S-LOC 36L		880/24		292 (300-½)			