

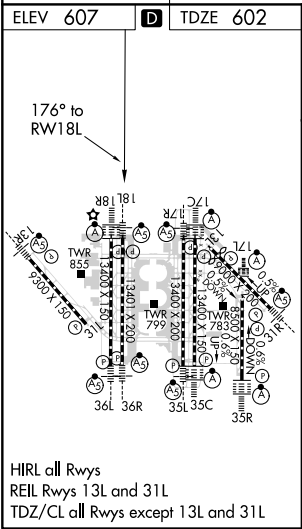
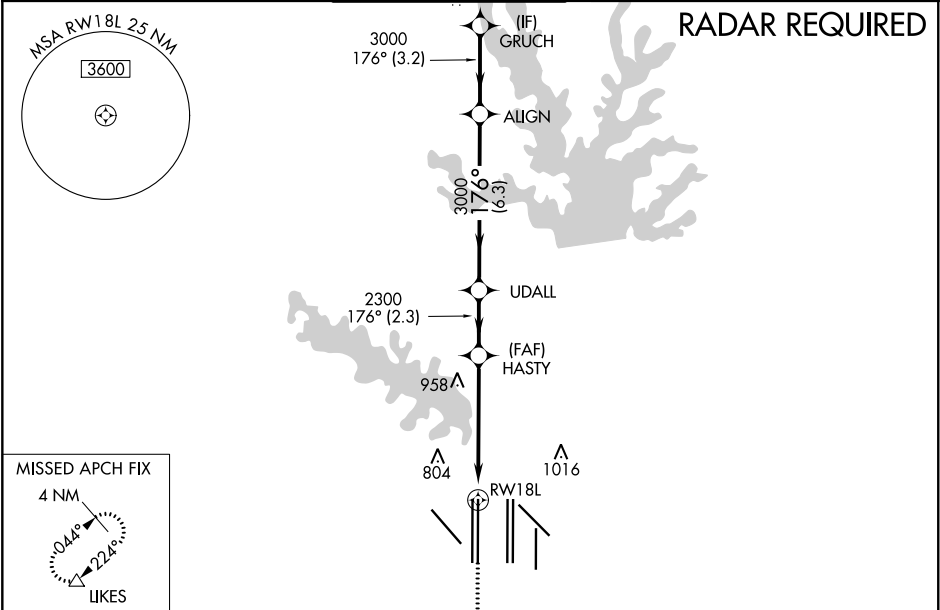
WAAS CH <b>86807</b> <b>W18A</b>	APP CRS <b>176°</b>	Rwy Idg <b>13401</b> TDZE <b>602</b> Apt Elev <b>607</b>	<b>RNAV (GPS) RWY 18L</b> DALLAS-FORT WORTH INTL (DFW)
--	------------------------	--	---

**⚠** For uncompensated Baro-VNAV systems, LNAV/VNAV NA Below -4°C (25°F) or above 54°C (130°F). For inop MALS, increase LNAV Cats C and D visibility to 1¾. Simultaneous approach authorized with Rwy 17L/C/R. DME/DME RNP-0.3 NA. LNAV procedure NA during simultaneous operations. Use of FD or AP providing RNAV track guidance required during simultaneous operations.

**MALS**

**MISSED APPROACH:** Climb to 1100, then climbing right turn to 3000 direct **LIKES** and hold.

D-ATIS ARR <b>123.775</b> DEP <b>135.925</b>	REGIONAL APP CON <b>118.425</b>	DFW TOWER <b>126.55 127.5</b> EAST <b>124.15 134.9</b> WEST	GND CON <b>121.65 121.8</b> EAST <b>121.85</b> WEST	CLNC DEL <b>128.25</b>	CPDLC
--	------------------------------------	---	---	---------------------------	-------



1100		3000	LIKES	VGSI and RNAV glidepath not coincident (VGSI Angle 3.00/TCH 70).	
↑		↗	△		
*LNAV only.		*1.7 NM to RW18L		GRUCH	
RW18L		HASTY		UDALL	ALIGN
		2300	3000	3000	4000
1.7 NM		3.5 NM	2.3 NM	6.3 NM	3.2 NM
176°		2300		GP 3.00° TCH 55	
CATEGORY	A		B		D
LPV DA	802/18		200 (200-½)		
LNAV/ VNAV	980/40		378 (400-¾)		
LNAV MDA	1220/24 618 (700-½)		1220-1⅜ 618 (700-1⅝)		