

APP CRS <b>315°</b>	Rwy Idg <b>9300</b> TDZE <b>581</b> Apt Elev <b>607</b>
------------------------	---

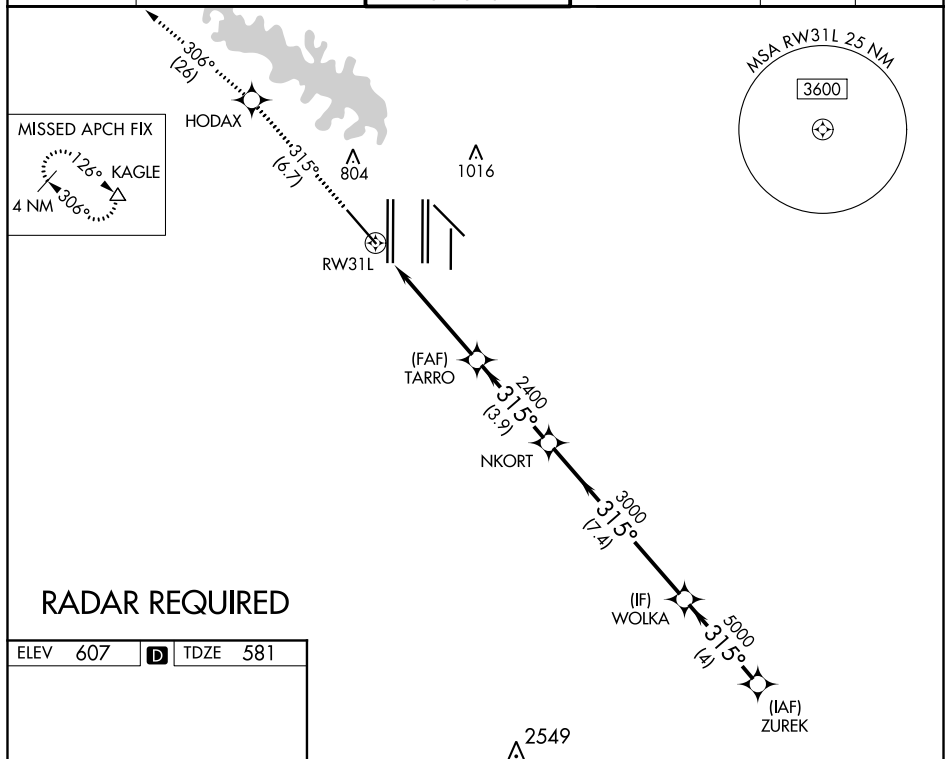
## RNAV (RNP) Z RWY 31L

DALLAS-FORT WORTH INTL (DFW)

**T** For uncompensated Baro-VNAV systems, procedure NA below -4°C (25°F) or above 54°C (130°F). Simultaneous approach authorized with Rwy 31R. GPS Required. Use of FD or AP providing RNAV track guidance required during simultaneous operations.

**MISSED APPROACH:** Climb to 3000 on track 315° to HODAX and on track 306° to KAGLE and hold.

D-ATIS	REGIONAL APP CON		DFW TOWER		GND CON		CLNC DEL	CPDLC
ARR 123.775	118.425	127.075	126.55	127.5 EAST	121.65	121.8 EAST	128.25	
DEP 135.925			124.15	134.9 WEST	121.85	WEST		



3000 ↑ tr 315°	HODAX ✦	tr 306°	KAGLE △	VGS1 and RNAV glidepath not coincident (VGS1 Angle 3.13/TCH 72).	
				WOLKA	ZUREK
				315°	5000
				3000	
				2400	
				5.6 NM	3.9 NM
				7.4 NM	4 NM
				GP 3.00° TCH 54	
CATEGORY	A		B		C
RNP 0.30 DA	951/60		370 (400-1¼)		
AUTHORIZATION REQUIRED					