

WAAS CH 50441 W02A	APP CRS 017°	Rwy Idg TDZE Apt Elev	5218 3256 3265
--	------------------------	-----------------------------	---

RNAV (GPS) RWY 2
TERRY COUNTY (BFE)

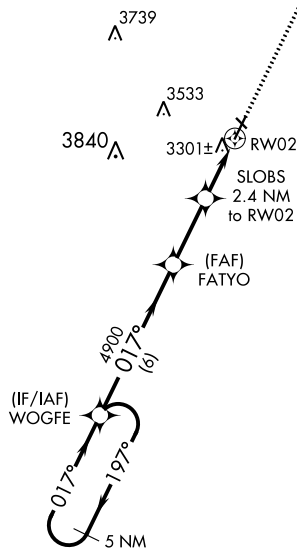
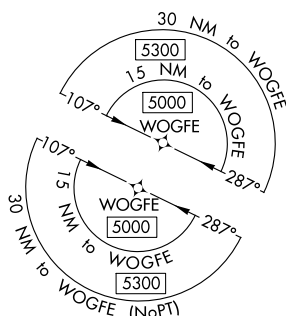
T Baro-VNAV NA. Circling Rwy 13, 31 NA at night. DME/DME RNP-0.3 NA.
A NA Use Lubbock altimeter setting. When not received, use Seminole altimeter setting and increase LPV DA to 3600; increase LNAV/VNAV DA to 3600; and increase all MDA 20 feet.

MISSED APPROACH: Climb to 5200 direct LEBDE and hold.

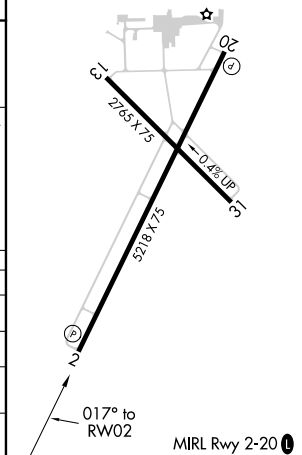
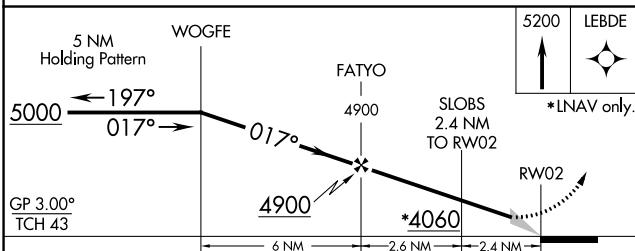
LBB ASOS 125.3	LUBBOCK APP CON 119.2 351.8	UNICOM 122.8 (CTAF) 0
--------------------------	---------------------------------------	--




5 NM



ELEV	3265		TDZE	3256
------	------	--	------	------



CATEGORY		A	B	C	D
LPV	DA	3589-1		333 (400-1)	
RNAV/ VNAV	DA	3589-1		333 (400-1)	
RNAV	MDA	3640-1 384 (400-1)		3640-1½ 384 (400-1½)	
 CIRCLING		3760-1 495 (500-1)	3920-1 655 (700-1)	3980-2 715 (800-2)	4100-2¾ 835 (900-2¾)