

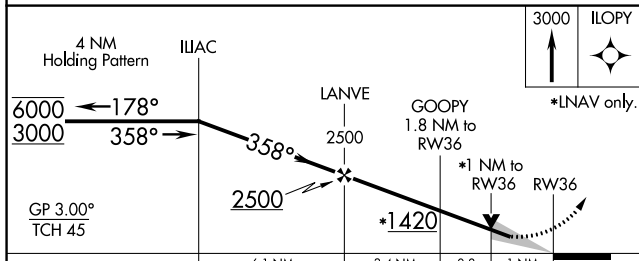
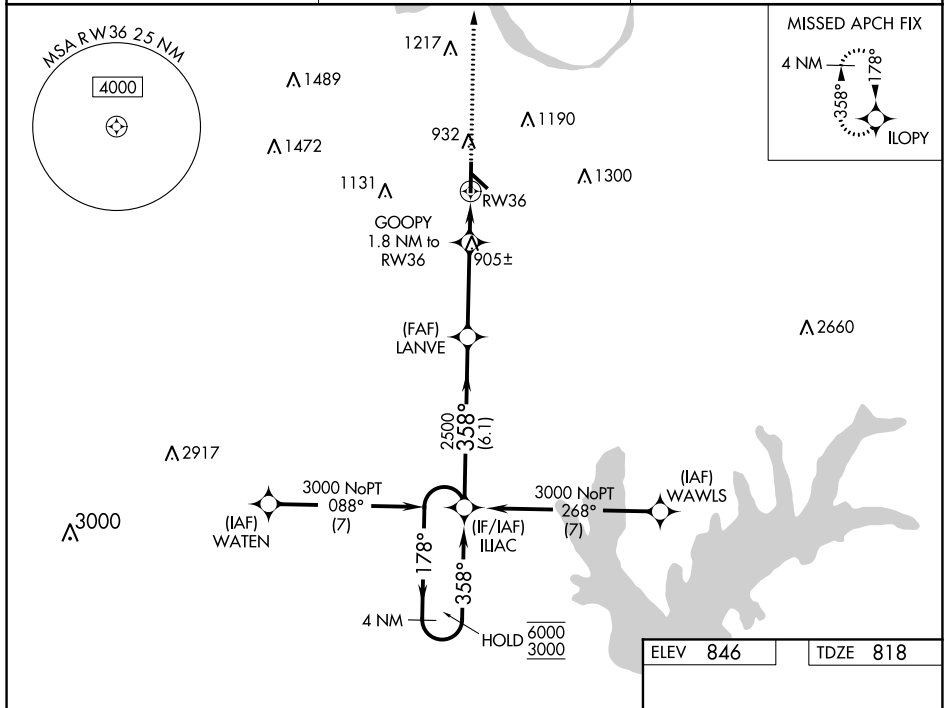
19171


RNAV (GPS) RWY 36
GAINESVILLE MUNI (GLE)

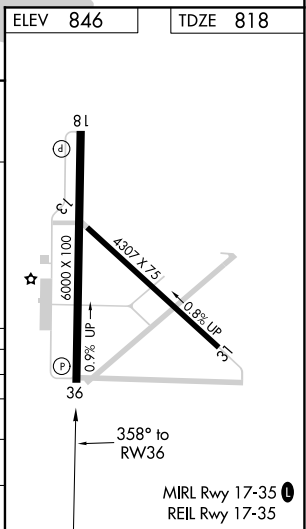
T For uncompensated Baro-VNAV systems, LNAV/VNAV NA below -16°C or above 54°C.

MISSED APPROACH: Climb to 3000 direct ILOPY and hold.

AWOS-3 118.375	FORT WORTH CENTER 124.75 323.0	UNICOM 123.0 (CTAF) 0
--------------------------	--	---------------------------------



CATEGORY		A	B	C	D
LPV	DA	1068- ³ / ₄ 250 (300- ³ / ₄)			
LNAV/ VNAV	DA	1068- ³ / ₄ 250 (300- ³ / ₄)			
LNAV	MDA	1160-1 342 (400-1)			
 CIRCLING		1300-1 454 (500-1)	1340-1 494 (500-1)	1520-2 674 (700-2)	1600-2½ 754 (800-2½)

GAINESVILLE MUNI (GLE)
RNAV (GPS) RWY 36

SC-2, 03 DEC 2020 to 31 DEC 2020