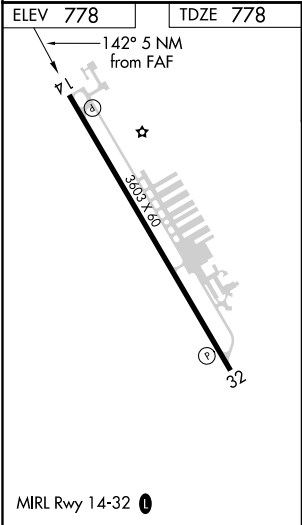
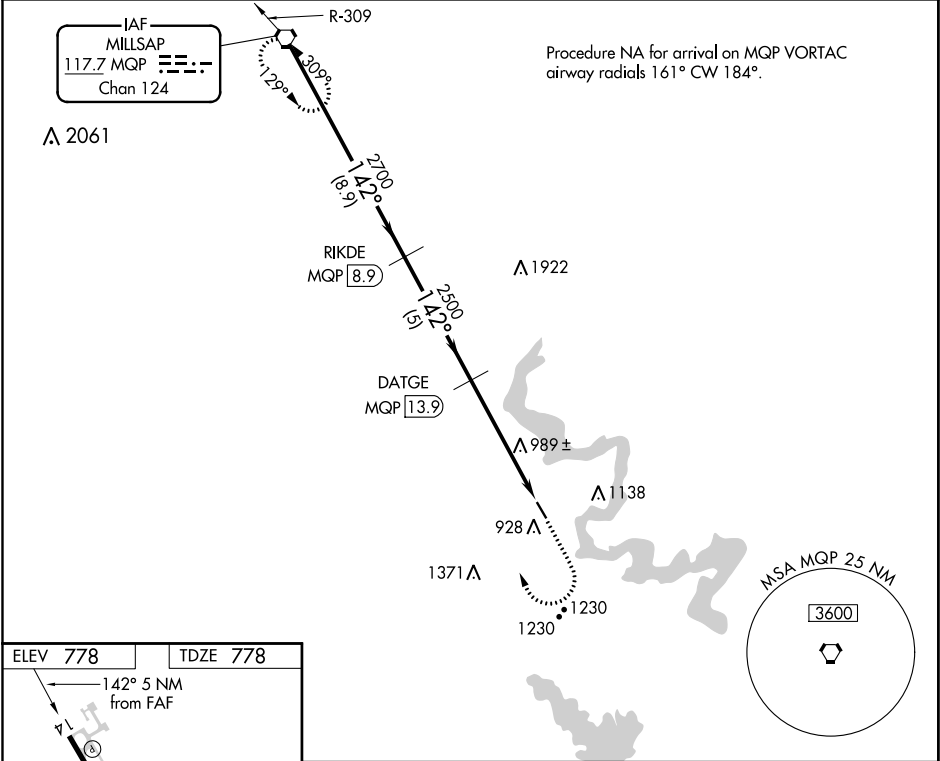


VORTAC MQP	APP CRS	Rwy Idg	3603
117.7	142°	TDZE	778
Chan 124		Apt Elev	778

VOR/DME RWY 14
GRANBURY RGNL (GDJ)

<p>▼ Use Fort Worth Meacham Intl altimeter setting. Night Landing: ▲ NA Rwy 14 NA. Helicopter visibility reduction below 1 SM NA.</p>	MISSED APPROACH: Climb to 2000, then climbing right turn to 3000 direct MQP VORTAC and hold.
---	--

AWOS-3 118.925	FORT WORTH CENTER 127.15 314.0	UNICOM 123.0 (CTAF) 0
-------------------	-----------------------------------	--------------------------



VGSi and descent angles not coincident (VGSi angle 3.00/TCH 30).				2000	3000	MQP
MQP VORTAC				↑	↷	◻
3000				142°		
Procedure Turn NA				2700		
8.9 NM				5 NM		
CATEGORY				A		
S-14				1400-1 622 (700-1)		
CIRCLING				1420-1 642 (700-1)		
B				1440-1 662 (700-1)		
C				1400-1 622 (700-1 3/4)		
D				1440-1 662 (700-1 3/4)		