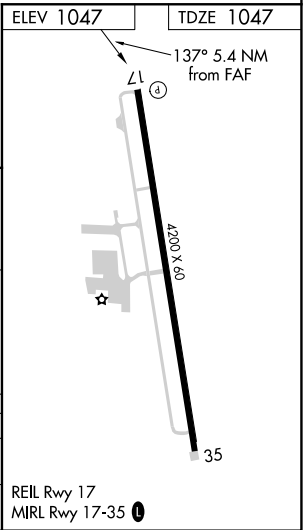
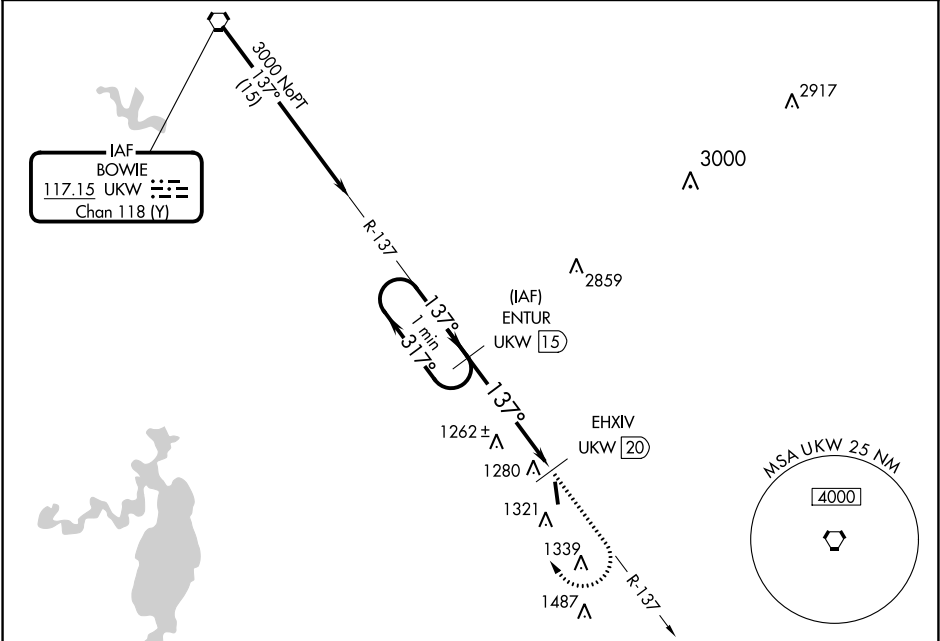


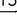
VORTAC UKW	APP CRS	Rwy Idg	4200
117.15	137°	TDZE	1047
Chan 118 (Y)		Apt Elev	1047

VOR/DME RWY 17
DECATUR MUNI (LUD)

 When local altimeter setting not received, use Fort Worth	MISSED APPROACH: Climb to 2400 then climbing right
 NA Meacham Intl altimeter setting.	turn to 3100 via UKW R-137 to ENTUR/15 DME and hold.

AWOS-3 118.225	REGIONAL APP CON 118.1 306.95	UNICOM 122.8 (CTAF) 
--------------------------	---	---



One Minute Holding Pattern		ENTUR UKW 15		<div><div>2400 ↑</div><div>3100 ↷ UKW R-137</div></div>		ENTUR UKW 15	
3100 ← 317° 137° →		3000		EHXIV UKW 20		↷	
VGSI and descent angles not coincident (VGSI Angle 3.50/TCH 23).		3.32° TCH 40		5 NM		0.5	
CATEGORY	A	B	C	D			
S-17	1700-1 653 (700-1)	1700-1¼ 653 (700-1¼)	NA				
 CIRCLING	1800-1 753 (800-1)	1800-1¼ 753 (800-1¼)	NA				