

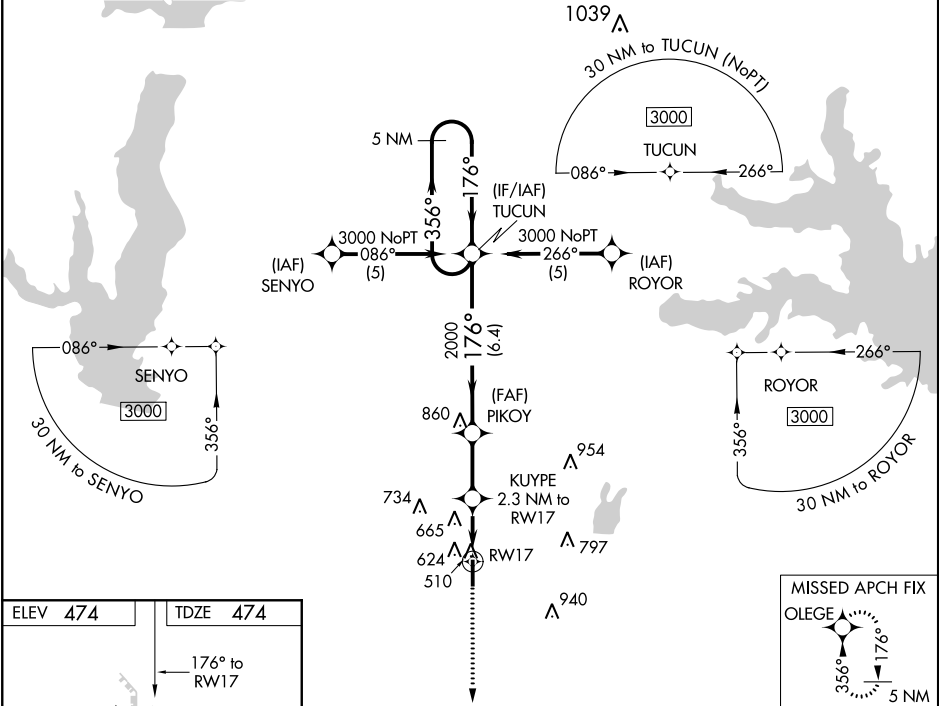
WAAS CH 77699 W17A	APP CRS 176°	Rwy Idg TDZE 474 Apt Elev 474
--	------------------------	---

RNAV (GPS) RWY 17
TERRELL MUNI (TRL)

⚠ When local altimeter setting not received, use Dallas-Love Field altimeter setting and increase all DA 73 feet and all MDA 80 feet; increase LNAV/VNAV all Cats visibility to 2½ mile, LNAV Cat C to 1¾ mile and Circling Cat C to 1¾ mile. Baro-VNAV and VDP NA when using Dallas-Love Field altimeter setting. For uncompensated Baro-VNAV systems, LNAV/VNAV NA below -7°C (20°F) or above 54°C (130°F). DME/DME RNP-0.3 NA. Helicopter visibility reduction below ¾ SM NA.

MISSED APPROACH: Climb to 3000 direct OLEGE and hold.

ASOS 119.275	FORT WORTH CENTER 132.025 360.75	UNICOM 122.8 (CTAF) 0
------------------------	--	---------------------------------



ELEV **474** | TDZE **474**

176° to RW17

0.43° UP

5000 X 75

35

RLS Rwy 17 0

REIL Rws 17 and 35

MIRL Rws 17-35 0

3000	OLEGE	VGSi and RNAV glidepath not coincident (VGSi Angle 3.00/TCH 32).		5 NM Holding Pattern
*LNAV only		KUYPE 2.3 NM to RW17	PIKOY	356° → 3000
*1.4 NM to RW17		1240	2000	GP 3.00° TCH 45
1.4		0.9	2.3 NM	6.4 NM
CATEGORY	A	B	C	D
LPV DA	756-1		282 (300-1)	NA
LNAV/VNAV DA	1013-1¾		539 (600-1¾)	NA
LNAV MDA	960-1		486 (500-1)	960-1¾ 486 (500-1¾)
CIRCLING	1000-1 526 (600-1)	1020-1 546 (600-1)	1020-1½ 546 (600-1½)	NA

SC-2, 03 DEC 2020 to 31 DEC 2020

SC-2, 03 DEC 2020 to 31 DEC 2020