

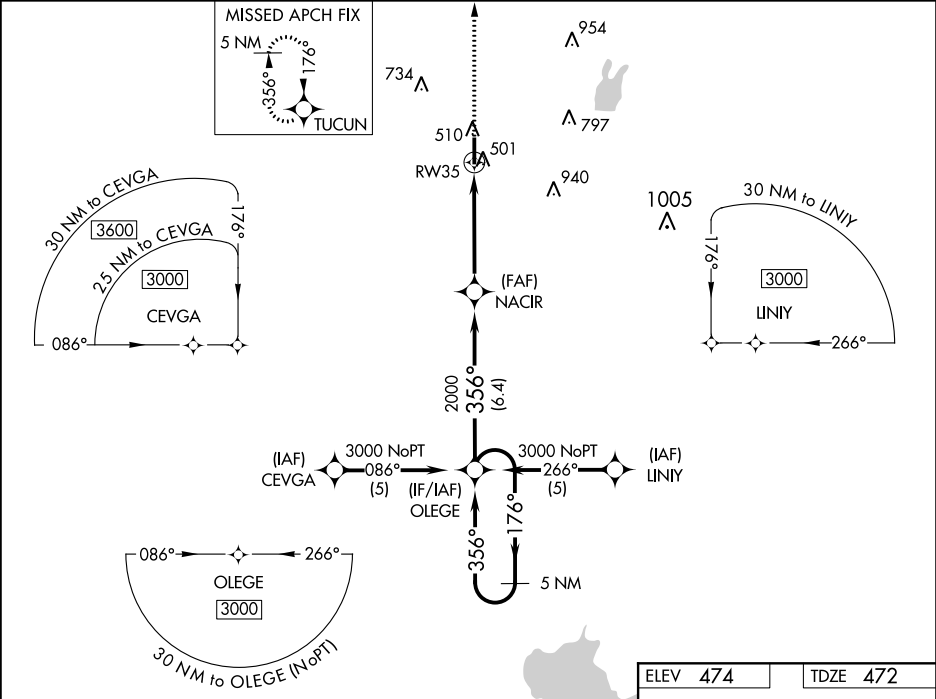
WAAS CH 81999 W35A	APP CRS 356°	Rwy Idg TDZE 472 Apt Elev 474
--	------------------------	---

RNAV (GPS) RWY 35
TERRELL MUNI (TRL)

Baro-VNAV and VDP NA when using Dallas-Love Field altimeter setting. For uncompensated Baro-VNAV systems, LNAV/VNAV NA below -7°C (20°F) or above 54°C (130°F). DME/DME RNP-0.3 NA. When local altimeter setting not received, use Dallas-Love Field altimeter setting and increase all DA 73 feet and all MDA 80 feet; increase LPV all Cats, LNAV/VNAV all Cats, LNAV Cat C and Circling Cat C visibility ¼ mile. Helicopter visibility reduction below ¾ SM NA.

MISSED APPROACH: Climb to 3000 direct TUCUN and hold.

ASOS 119.275	FORT WORTH CENTER 132.025 360.75	UNICOM 122.8 (CTAF) 0
------------------------	--	---------------------------------



VGSI and RNAV glidepath not coincident (VGSI Angle 3.00/TCH 31).				
5 NM Holding Pattern				
3000 ← 176° → 356° → 356° → 356° → 2000 → 356° → RW35 → 176° → TUCUN				
GP 3.00° TCH 45				
6.4 NM → 3.5 NM → 1.1 NM				
CATEGORY	A	B	C	D
LPV DA	730-7/8	258 (300-7/8)		NA
LNAV/VNAV DA	801-1 1/8	329 (400-1 1/8)		NA
LNAV MDA	820-1	348 (400-1)		NA
CIRCLING	980-1 506 (600-1)	1020-1 546 (600-1)	1020-1 1/2 546 (600-1 1/2)	NA

