


HENDERSON, TEXAS

AL-6358 (FAA)

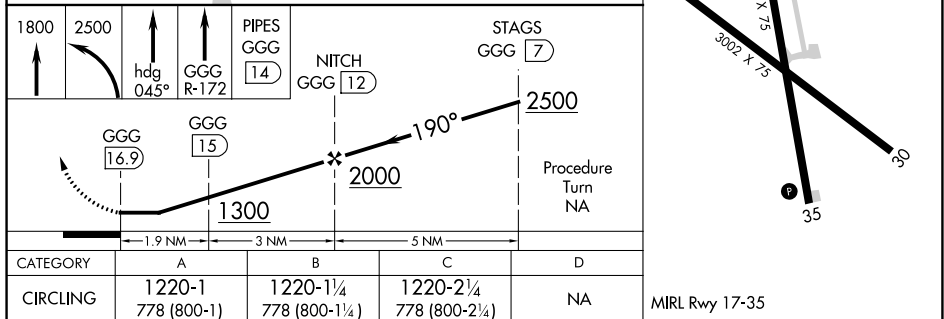
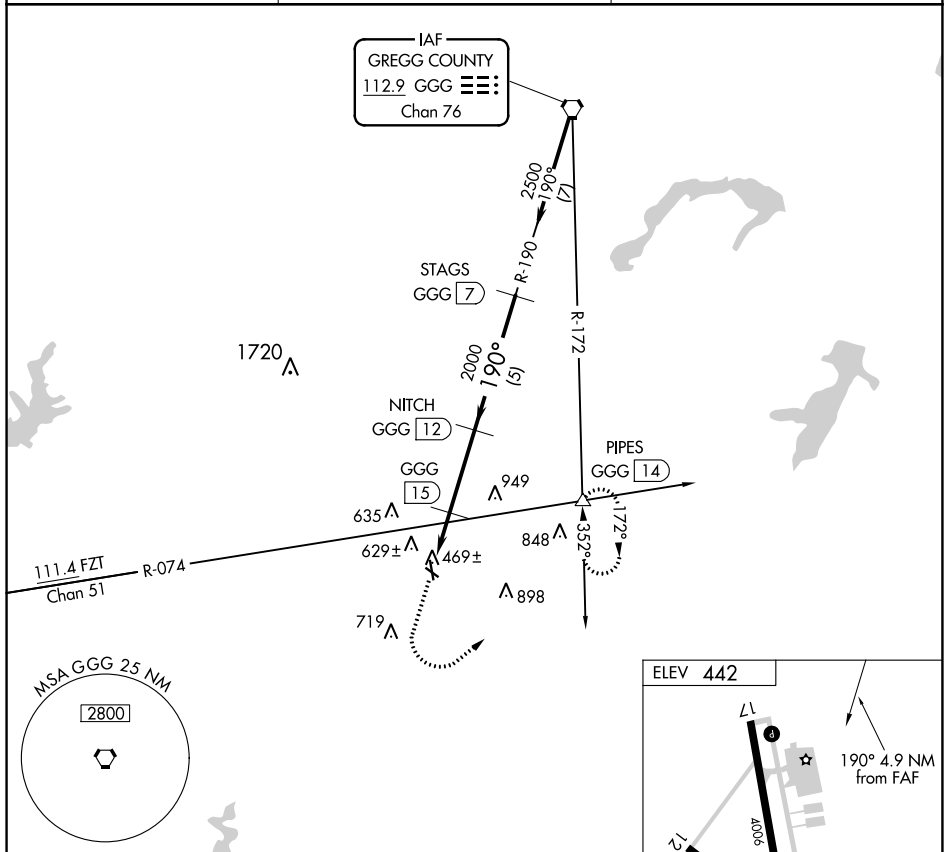
20198

VORTAC GGG 112.9 Chan 76	APP CRS 190°	Rwy Idg TDZE Apt Elev	N/A N/A 442
--	------------------------	-----------------------------	--

VOR/DME-A
RUSK COUNTY (RFI)

	Use East Texas Rgnl altimeter setting; when not received, procedure NA.	MISSED APPROACH: Climb to 1800 then climbing left turn to 2500 via heading 045° and GGG R-172 to PIPES INT/14 DME and hold.
---	---	---

AWOS-3 119.375	LONGVIEW APP CON ★ 124.275 257.975	UNICOM 122.8 (CTAF) 0
--------------------------	--	---------------------------------



HENDERSON, TEXAS

Amdt 3B 06JUL06

32°09'N-94°51'W

RUSK COUNTY (RFI)
VOR/DME-A

SC-2, 03 DEC 2020 to 31 DEC 2020

SC-2, 03 DEC 2020 to 31 DEC 2020