

DUMAS, TEXAS

AL-6429 (FAA)

19115

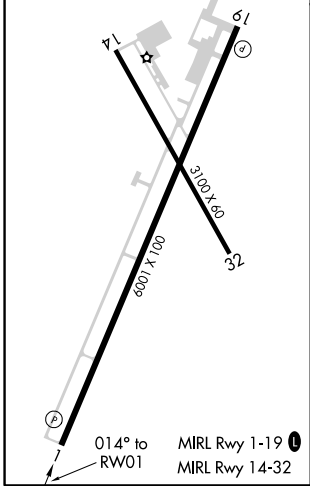
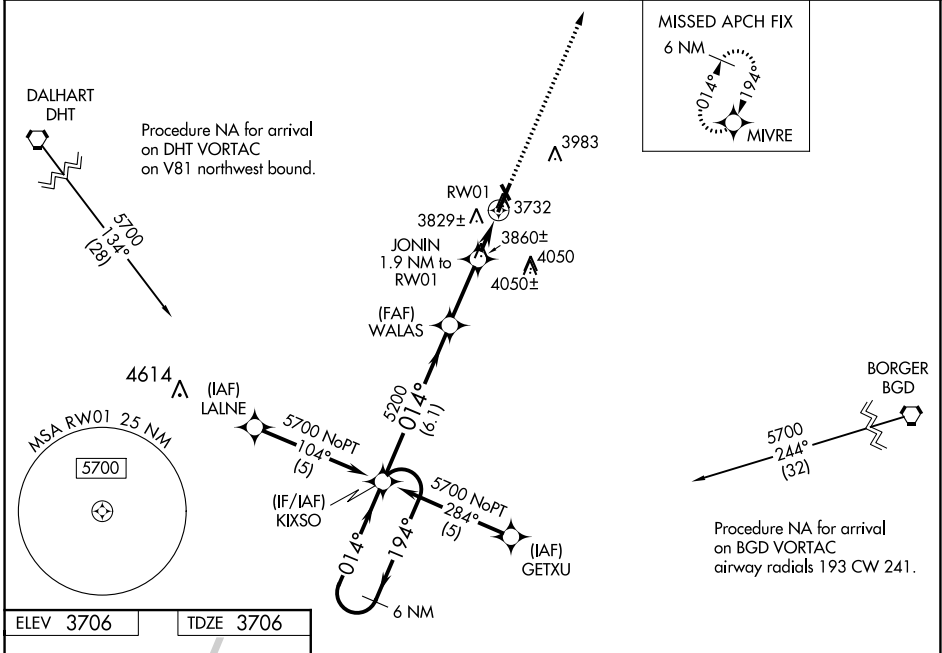
WAAS CH <b>63016</b> <b>W01A</b>	APP CRS <b>014°</b>	Rwy Idg TDZE <b>3706</b> Apt Elev <b>3706</b>
--	------------------------	---

**RNAV (GPS) RWY 1**  
MOORE COUNTY (DUX)

**Baro-VNAV NA** when using Dalhart altimeter setting. For uncompensated Baro-VNAV systems, LNAV/VNAV NA below -22°C (-7°F) or above 41°C (105°F). DME/DME RNP-0.3 NA. When local altimeter setting not received, use Dalhart altimeter setting and increase DA 104 feet and all MDA 120 feet, increase LNAV/VNAV all Cats, LNAV Cats C and D and Circling Cat C and D visibility ¼ mile. VDP NA with Dalhart altimeter setting. Night landing: Rwy 14, 32 NA.

**MISSED APPROACH:** Climb to 5700 direct to MIVRE and hold.

AWOS-3 <b>118.075</b>	ALBUQUERQUE CENTER <b>127.85 285.475</b>	UNICOM <b>122.8 (CTAF) 0</b>
--------------------------	---	---------------------------------



6 NM Holding Pattern		KIXSO	WALAS	JONIN 1.9 NM to RW01	5700	MIVRE
5700 ← 194°		014° →	5200	*1.3 NM to RW01	5700	MIVRE
GP 3.00° TCH 50		5200	*4360	RW01		
		6.1 NM	2.6 NM	0.6	1.3	
CATEGORY	A	B	C	D		
LPV DA	3906-1		200 (200-1)			
LNAV/VNAV DA	4132-1½		426 (500-1½)			
LNAV MDA	4160-1	454 (500-1)	4160-1¼ 454 (500-1¼)	4160-1½ 454 (500-1½)		
CIRCLING	4160-1 454 (500-1)	4220-1 514 (600-1)	4220-1½ 514 (600-1½)	4300-2 594 (600-2)		

DUMAS, TEXAS

Orig-A 23JUL15

35°51'N-102°01'W

**MOORE COUNTY (DUX)**  
**RNAV (GPS) RWY 1**

SC-2, 03 DEC 2020 to 31 DEC 2020