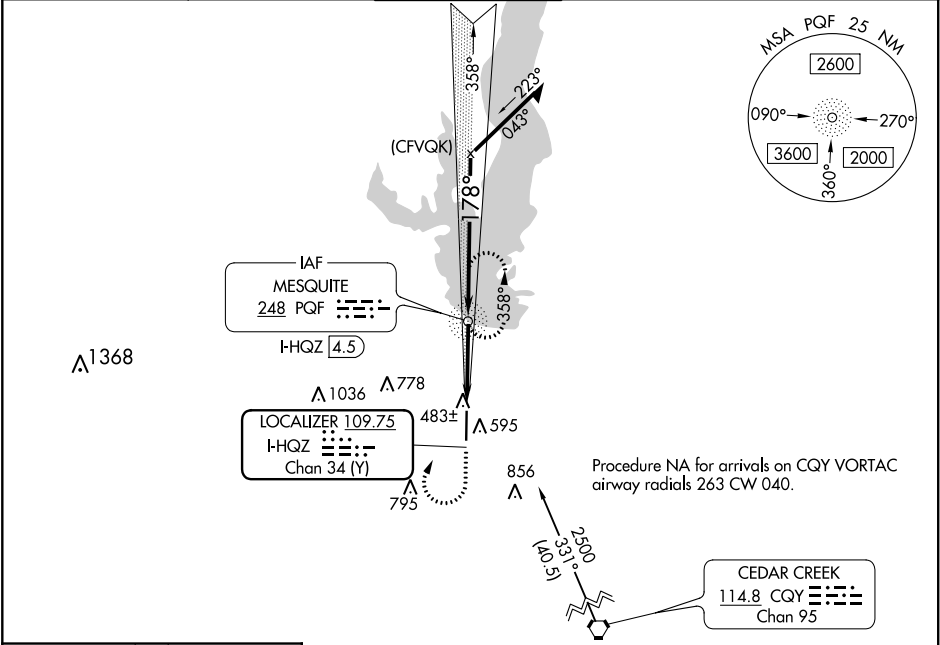


LOC/DME I-HQZ 109.75 Chan 34 (Y)	APP CRS 178°	Rwy Idg 6000 TDZE 447 Apt Elev 447	ILS or LOC RWY 18 MESQUITE METRO (HQZ)
--	------------------------	---	---

V VDP NA with Dallas-Love Field altimeter setting.
When local altimeter setting not received, use Dallas-Love Field altimeter setting.
ADF Required.

MISSED APPROACH: Climb to 2100 then right turn direct PQF NDB and hold.

AWOS-3 118.175	REGIONAL APP CON 125.2 343.65	MESQUITE TOWER★ 120.3 (CTAF) 0	GND CON 118.85	UNICOM 123.05
--------------------------	---	---	--------------------------	-------------------------



ELEV **447** TDZE **447**

178° 3.2 NM from FAF

TWR 535

001 X 0009

MIRL Rwy 18-36

REIL Rwys 18 and 36

RLLS Rwys 18 and 36

FAF to MAP 3.2 NM

Knots	60	90	120	150	180
Min:Sec	3:12	2:08	1:36	1:17	1:04

2100 PQF

*LOC only.

*I-HQZ 2

I-HQZ 1.3

1544

358°

178°

2100

1600

GP 3.00° TCH 56

0.8 NM 2.5 NM

Remain within 10 NM

CATEGORY	A	B	C	D
S-ILS 18	697-3/4	250 (300-3/4)		NA
S-LOC 18	740-1	293 (300-1)	740-7/8 293 (300-7/8)	NA
CIRCLING	960-1	513 (600-1)	1160-2 713 (800-2)	NA
DALLAS-LOVE FIELD ALTIMETER SETTING MINIMUMS				
S-ILS 18	743-7/8	296 (300-7/8)		NA
S-LOC 18	800-1	353 (400-1)		NA
CIRCLING	1020-1	573 (600-1)	1220-2 1/4 773 (800-2 1/4)	NA

SC-2, 03 DEC 2020 to 31 DEC 2020

SC-2, 03 DEC 2020 to 31 DEC 2020