

VORTAC BYP	APP CRS	Rwy Idg	N/A
114.6	214°	TDZE	N/A
Chan 93		Apt Elev	589

VOR/DME-A

MCKINNEY NATIONAL (TKI)

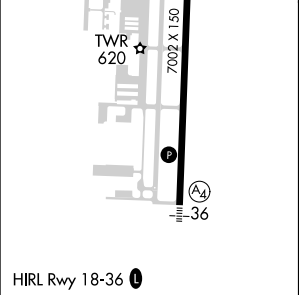
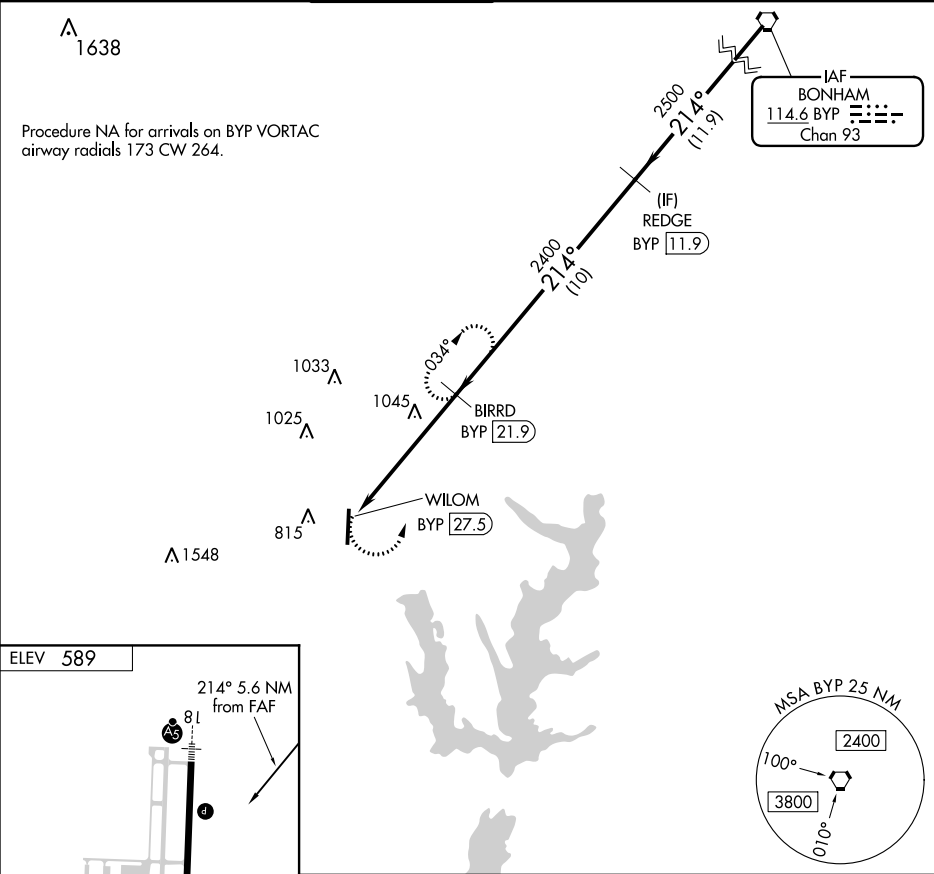
▼

When local altimeter setting not received use Dallas Love Field altimeter setting and increase all MDA 80 feet and Cats C and D visibility ¼ mile.

▲

MISSED APPROACH: Climbing left turn to 2400 on BYP VORTAC R-214 to BIRRD/BYP 21.9 DME and hold.

ASOS	REGIONAL APP CON	MC KINNEY TOWER ★	GND CON	CLNC DEL	UNICOM
119.925	124.3 282.275	118.825 (CTAF) 0	121.875	121.35 (When twr closed)	122.95



<p>2400</p> <p>BIRRD BYP 21.9</p> <p>BYP R-214</p> <p>WILOM BYP 27.5</p> <p>BIRRD BYP 21.9</p> <p>REDGE BYP 11.9</p> <p>BYP VORTAC</p> <p>2400</p> <p>2500</p> <p>2500</p> <p>214°</p> <p>214°</p> <p>5.6 NM</p> <p>10 NM</p> <p>11.9 NM</p>				
CATEGORY	A	B	C	D
CIRCLING	1360-1 771 (800-1)	1360-1¼ 771 (800-1¼)	1360-2¼ 771 (800-2¼)	1380-2½ 791 (800-2½)

SC-2, 03 DEC 2020 to 31 DEC 2020

SC-2, 03 DEC 2020 to 31 DEC 2020