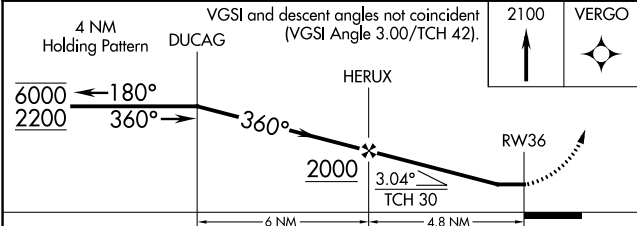
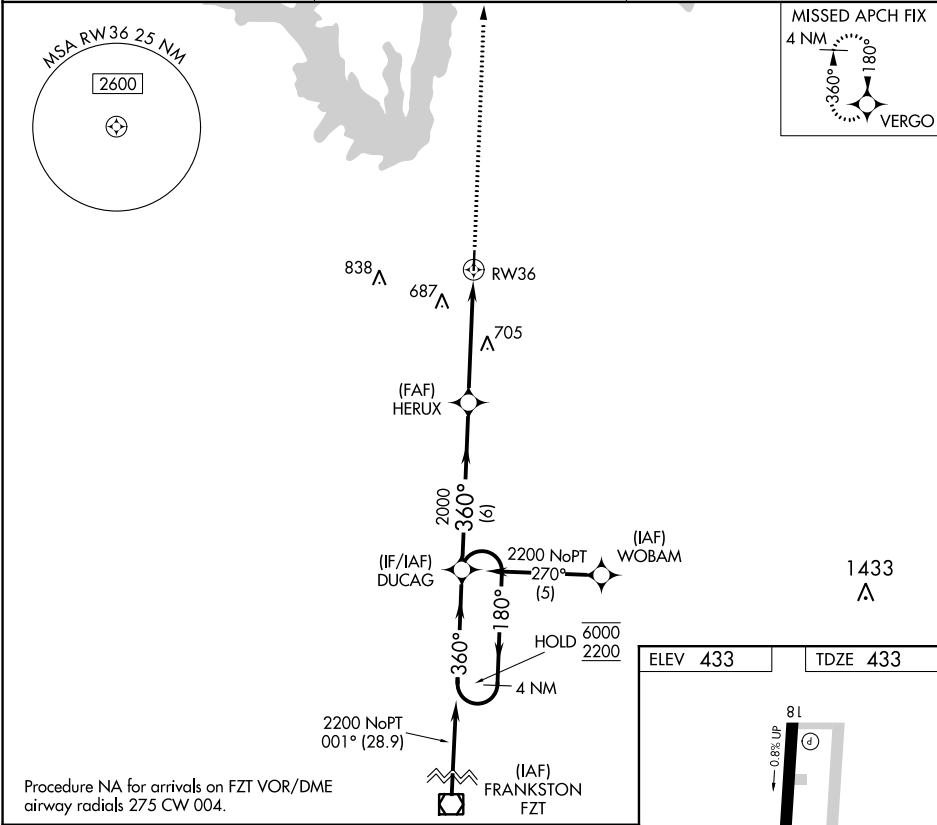


APP CRS	Rwy Idg	4002
360°	TDZE	433
	Apt Elev	433

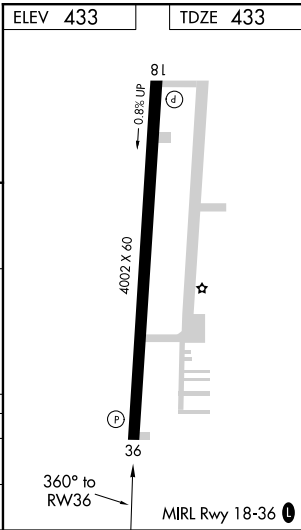
RNAV (GPS) RWY 36
WOOD COUNTY-COLLINS FIELD (JDD)

RNP APCH. ▼ Rwy 36 helicopter visibility reduction below 1 SM NA. ▲ Straight-in and Circling Rwy 36 NA at night.	MISSED APPROACH: Climb to 2100 direct VERGO and hold.
--	---

AWOS-3 118.9	LONGVIEW APP CON ★ 128.75 379.15	UNICOM 122.8 (CTAF) 0
-----------------	-------------------------------------	--------------------------



CATEGORY	A	B	C	D
RNAV MDA	960-1	527 (600-1)	960-1½ 527 (600-1½)	NA
CIRCLING	960-1	527 (600-1)	1000-1½ 567 (600-1½)	NA



SC-2, 03 DEC 2020 to 31 DEC 2020

SC-2, 03 DEC 2020 to 31 DEC 2020