

WAAS CH <b>82541</b> <b>W16B</b>	APP CRS <b>166°</b>	Rwy Idg <b>10600</b> TDZE <b>723</b> Apt Elev <b>723</b>
--	------------------------	--

## RNAV (GPS) RWY 16L

FORT WORTH ALLIANCE (AFW)

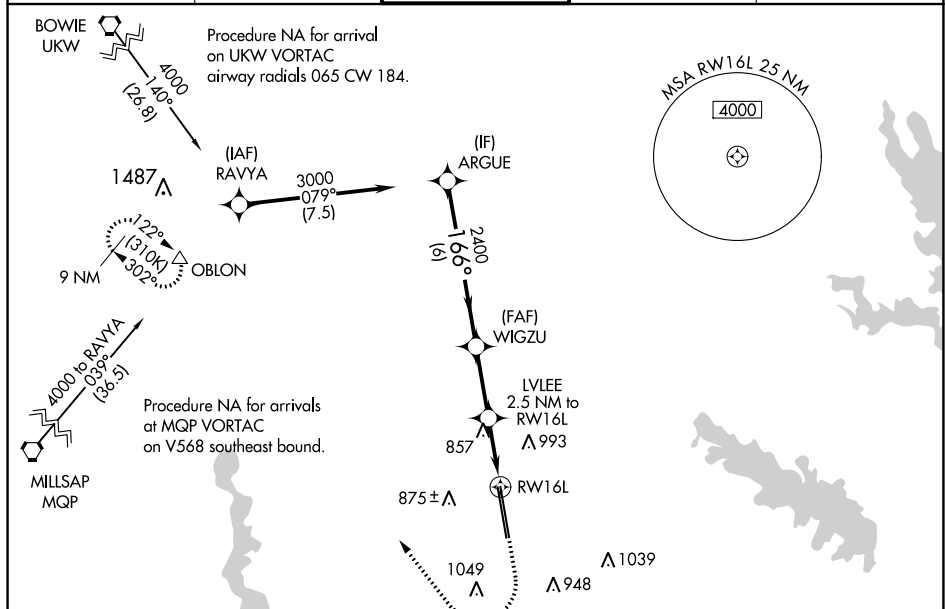
**T** For uncompensated Baro-VNAV systems, LNAV/VNAV NA below -8°C (18°F) or above 54°C (130°F). Circling NA east of Rwy 16L-34R. DME/DME RNP-0.3 NA. For inop ALS, increase LPV Cat E visibility to RVR 4000, LNAV/VNAV all Cats visibility to RVR 4500 and LNAV Cat E visibility to RVR 6000.

ALSF2



**MISSED APPROACH:** Climb to 1200 then climbing right turn to 3000 direct OBLON and hold.

ATIS 126.925	REGIONAL APP CON 118.1 306.95	ALLIANCE TOWER 135.15 257.9	GND CON 132.65 306.2	CLNC DEL 128.725
-----------------	----------------------------------	--------------------------------	-------------------------	---------------------



The diagram shows a runway layout with the following details:

- ELEV 723** and **TDZE 723** are indicated at the top.
- A heading of **166° to RW16L** is shown with an arrow pointing to the runway.
- The runway is labeled **16L** at the top and **34R** at the bottom.
- Runway markings include:
  - 791** at the top.
  - 6R** on the left side.
  - 0.5 DOWN** and **0.6 DOWN** on the left side.
  - 1100 X 150** in the center.
  - 0.7% UP** and **0.7% UP** on the right side.
  - 34L** at the bottom.
- A **TWR 836** (Tower) is located to the right of the runway.
- A **34R** marking is at the bottom right.

ARGUE 3000

WIGZU 2400

LVLEE 2500 NM to RW16L

\*1.1 NM to RW16L

RW16L

\*LNAV only.

GP 3.00° TCH 55

6 NM 2.6 NM 1.4 NM 1.1 NM

CATEGORY	A	B	C	D	E
LPV DA	923/18		200 (200-½)		
LNAV/VNAV DA	1016/24		293 (300-½)		
LNAV MDA	1120/24 397 (400-½)		1120/35 397 (400-¾)		
CIRCLING	1160-1 437 (500-1)	1320-1 597 (600-1)	1360-1¾ 637 (700-1¾)	1380-2 657 (700-2)	1380-2¼ 657 (700-2¼)