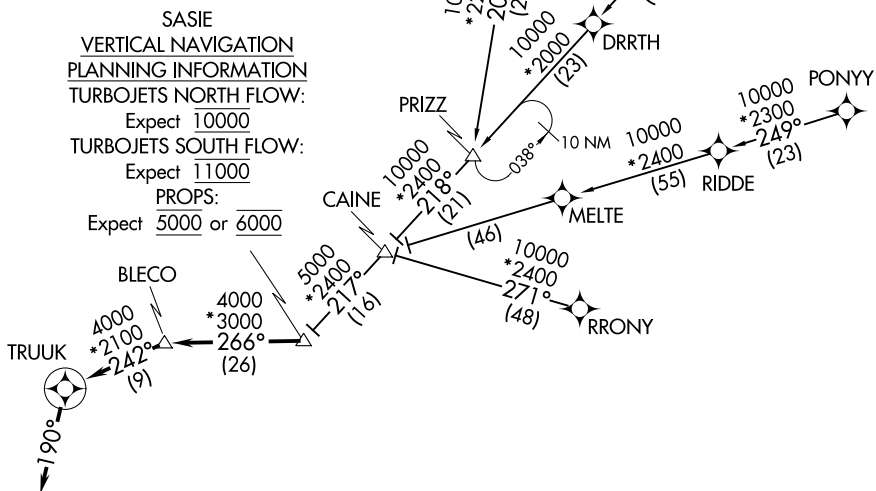


DALLAS-FORT WORTH, TEXAS

REGIONAL APP CON  
118.1 306.95  
AFW ATIS  
126.925  
FTW ATIS  
120.7  
NFW ATIS ★  
351 675

NOTE: RADAR required.  
NOTE: RNAV 1.  
NOTE: DME/DME/IRU or GPS required.



ARRIVAL ROUTE DESCRIPTION

AXXEE TRANSITION (AXXEE.TRUUK2): (For aircraft  
filing FL230 and below).

HITUG TRANSITION (HITUG.TRUUK2)

## PONYY TRANSITION (PONYY.TRUUK2)

RRNET TRANSITION (RRNET.TRUUK2)

RRONY TRANSITION (RRONY.TRUEUK2): (For aircraft  
filing FL230 and below).

From SASIE on track 266° to BLECO, then on track 242° to TRUUK, then on track 190°. Expect RADAR vectors to final approach course.

NOTE: Chart not to scale.

## DALLAS-FORT WORTH, TEXAS

(SASIE.TRUUK2) 31MAR16