

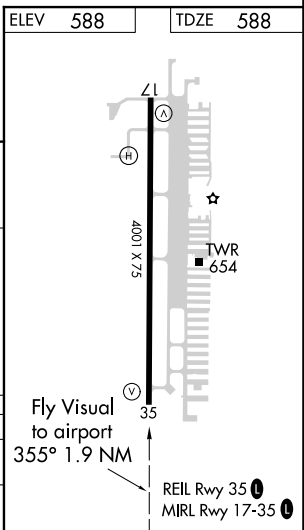
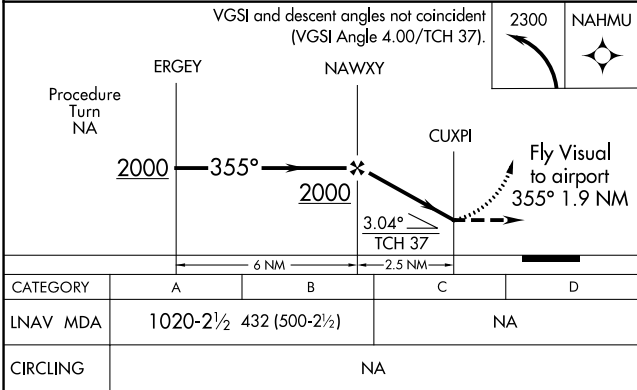
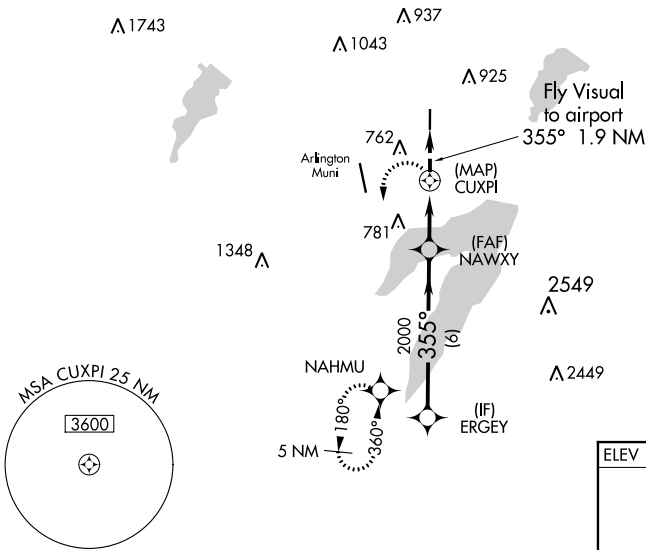
APP CRS	Rwy Idg	4001
355°	TDZE	588
	Apt Elev	588

AL-9209 (FAA)

RNAV (GPS) RWY 35
GRAND PRAIRIE MUNI (GPM)

RNP APCH.		MISSED APPROACH: Climbing left turn to 2300 direct NAHMU and hold.		
If local altimeter setting not received, use Arlington Muni altimeter setting.				
AWOS-3P 118.475	REGIONAL APP CON 135.975 379.9	GRAND PRAIRIE TOWER ★ 128.55 (CTAF) 0	GND CON 121.15	UNICOM 123.075

RADAR REQUIRED



SC-2, 03 DEC 2020 to 31 DEC 2020

SC-2, 03 DEC 2020 to 31 DEC 2020