

VOR/DME TTT	Rwy Idg	4001
113.1	TDZE	589
Chan 78	Apt Elev	589
APP CRS		
356°		

VOR/DME RWY 35

GRAND PRAIRIE MUNI (GPM)

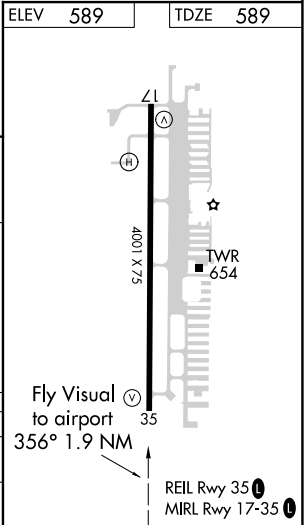
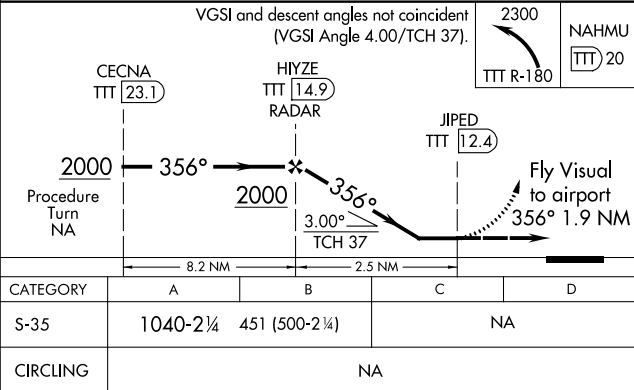
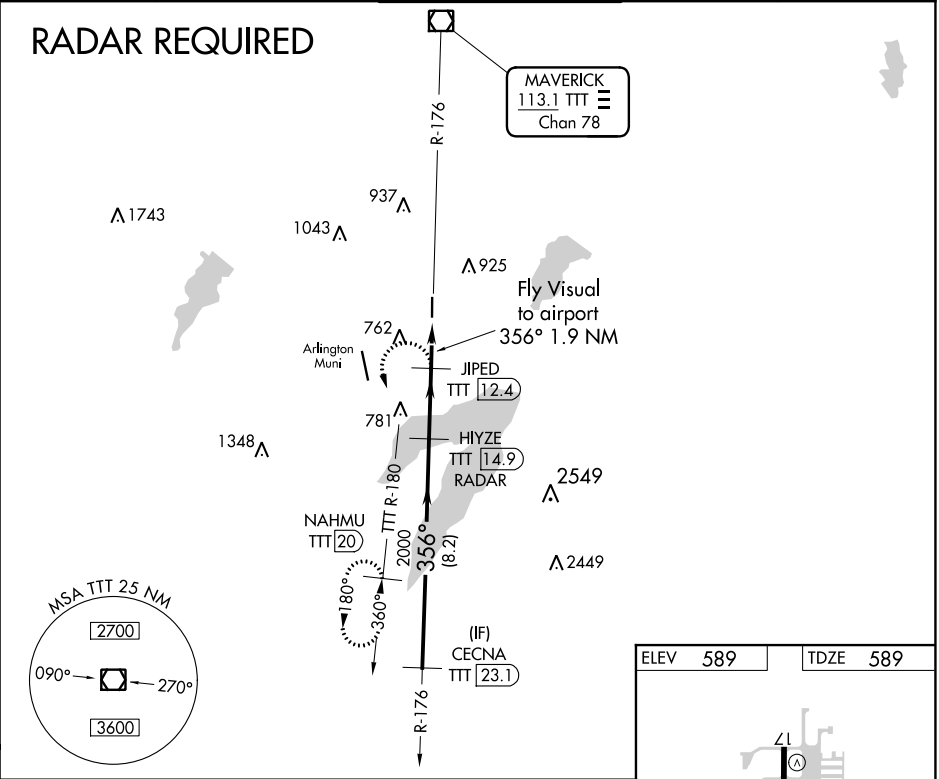
▼

▲

If local altimeter setting not received, use Arlington Muni altimeter setting.

MISSED APPROACH: Climbing left turn to 2300 via TTT R-180 to NAHMU/20 DME and hold.

AWOS-3P	REGIONAL APP CON	GRAND PRAIRIE TOWER★	GND CON	UNICOM
118.475	135.975 379.9	128.55 (CTAF) 0	121.15	123.075



SC-2, 03 DEC 2020 to 31 DEC 2020

SC-2, 03 DEC 2020 to 31 DEC 2020