

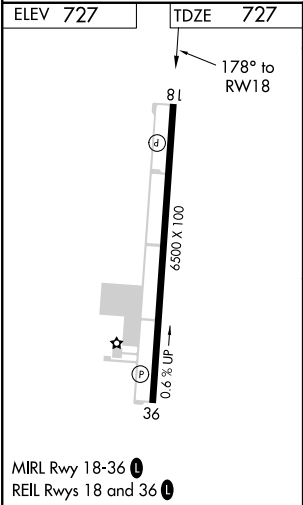
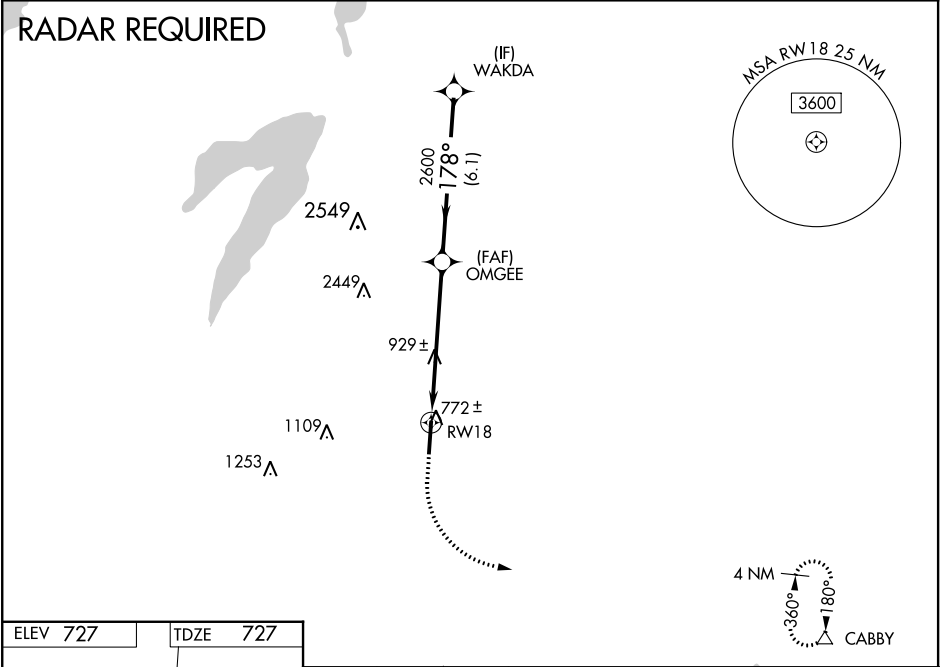
WAAS CH <b>62920</b> <b>W18A</b>	APP CRS <b>178°</b>	Rwy ldg TDZE <b>727</b> Apt Elev <b>727</b>	<b>6500</b>
--	------------------------	---	-------------

RNAV (GPS) RWY 18  
MID-WAY RGNL (JWY)

**⚠** Baro-VNAV NA when using Dallas Love Field altimeter setting. For uncompensated Baro-VNAV systems, LNAV/VNAV NA below -16°C (4°F) or above 39°C (102°F).  
**⚠** DME/DME RNP-0.3 NA. VDP NA with Dallas Love Field altimeter setting. When local altimeter setting not received, use Dallas Love Field altimeter setting and increase all DA 88 feet and all MDA 100 feet, increase LPV and LNAV/VNAV visibility ¼ mile all Cats, LNAV Cats C and D ⅓ mile, and Circling Cat D visibility ¼ mile.

**MISSED APPROACH:** Climb to 1300 then climbing left turn to 3000 direct CABBY and hold.

AWOS-3 <b>119.575</b>	REGIONAL APP CON <b>125.2 343.65</b>	UNICOM <b>122.975 (CTAF) 0</b>
--------------------------	---	-----------------------------------



1300	3000	CABBY			
*LNAV only.					
CATEGORY	A		B	C	D
LPV DA	927-¾ 200 (200-¾)				
LNAV/VNAV DA	977-⅞ 250 (300-⅞)				
LNAV MDA	1220-1	493 (500-1)	1220-1⅓ 493 (500-1⅓)		
CIRCLING	1220-1	493 (500-1)	1220-1½ 493 (500-1½)		1300-2 573 (600-2)