

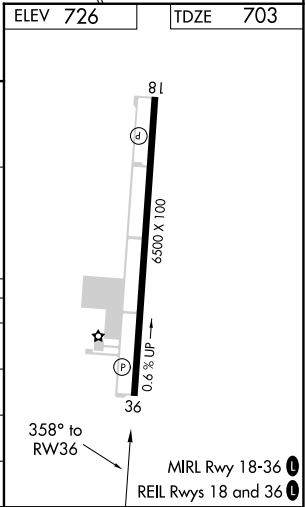
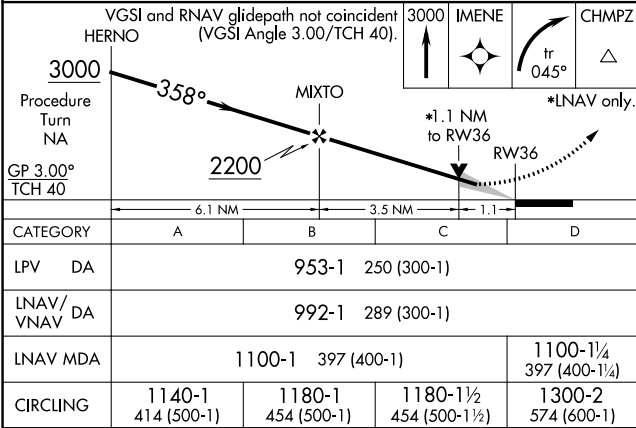
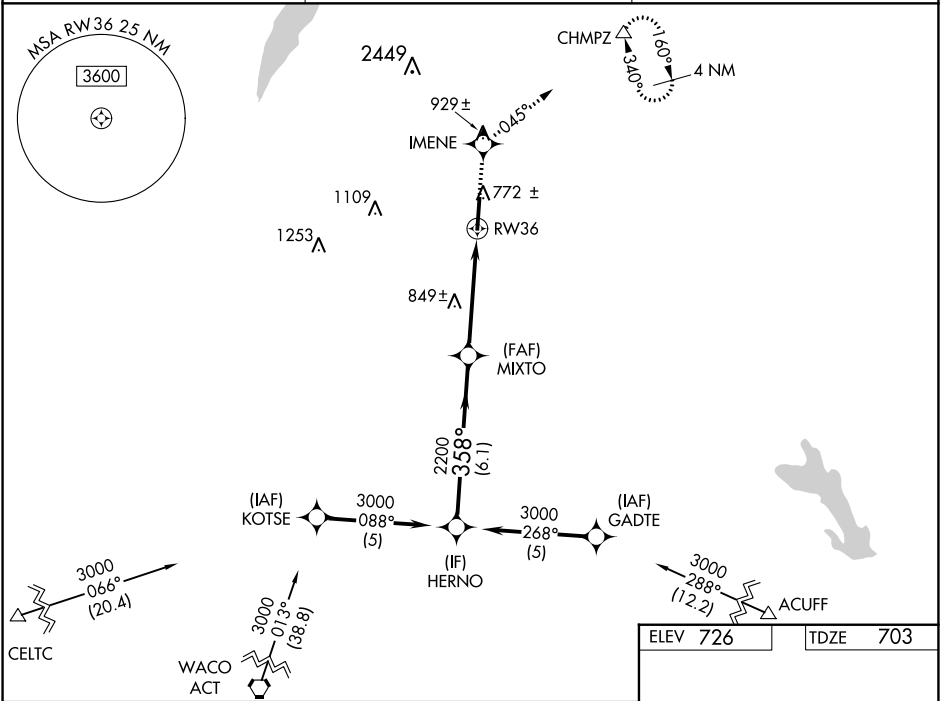
WAAS CH <b>62814</b> <b>W36A</b>	APP CRS <b>358°</b>	Rwy ldg TDZE <b>703</b> Apt Elev <b>726</b>
--	------------------------	---

RNAV (GPS) RWY 36  
MID-WAY RGNL (JWY)

For uncompensated Baro-VNAV systems, LNAV/VNAV NA below -16°C (4°F) or above 47°C (117°F). DME/DME RNP-0.3 NA. When local altimeter setting not received, use Dallas Love Field altimeter setting and increase all DA 88 feet and all MDA 100 feet, increase LPV all Cats visibility ¼ mile, LNAV/VNAV all Cats visibility ½ mile, LNAV Cats C and D visibility ¼ mile, Circling Cat D visibility ¼ mile. Baro-VNAV and VDP NA when using Dallas Love Field altimeter setting.

MISSED APPROACH: Climb to 3000 direct IMENE and right turn via track 045° to CHMPZ and hold, continue climb-in-hold to 3000.

AWOS-3 <b>119.575</b>	REGIONAL APP CON <b>125.2 343.65</b>	UNICOM <b>122.975 (CTAF) 0</b>
--------------------------	---	-----------------------------------



SC-2, 03 DEC 2020 to 31 DEC 2020

SC-2, 03 DEC 2020 to 31 DEC 2020