

WAAS CH <b>41250</b> <b>W18A</b>	APP CRS <b>177°</b>	Rwy Idg TDZE Apt Elev	<b>6064</b> <b>1711</b> <b>1711</b>
--	------------------------	-----------------------------	---

RNAV (GPS) Y RWY 18

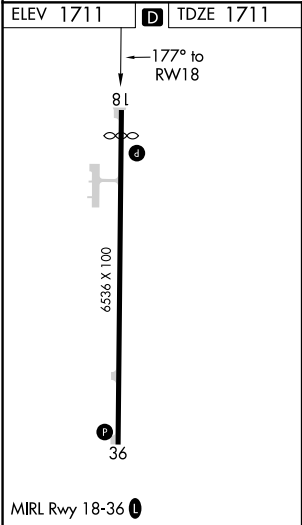
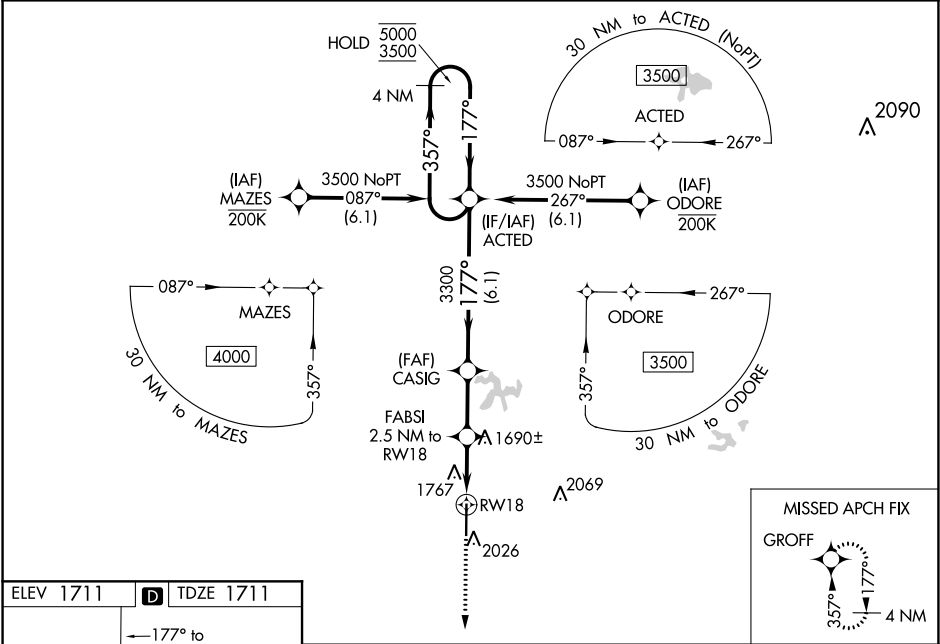
GREGORY M SIMMONS MEMORIAL (GZN)

RNP APCH.

⚠ Circling NA east of Rwy 18-36. Baro-VNAV and VDP NA when using Breckenridge altimeter setting. For uncompensated Baro-VNAV systems, LNAV/VNAV NA below -18°C or above 54°C. When local altimeter setting not received, use Breckenridge altimeter setting: increase all DAs 111 feet and visibility all Cats to 1¼ SM; increase all MDAs 120 feet and LNAV Cat C visibility to 1¾ SM. Rwy 18 helicopter visibility reduction below ¾ SM NA.

MISSED APPROACH:  
Climb to 3600 direct GROFF and hold.

AWOS-3PT <b>118.0</b>	ABILENE APP CON <b>125.0 338.3</b>	CTAF <b>122.9</b>
--------------------------	---------------------------------------	----------------------



3600	GROFF	CASIG	FBSI 2.5 NM to RWY 18	3300	2540*	3300	357°	5000	3500	4 NM Holding Pattern
*LNAV only.			*1 NM to RWY 18							GP 3.00° TCH 45
1 NM	1.5 NM	2.4 NM	6.1 NM							
CATEGORY	A	B	C	D						
LPV DA	1961-1	250 (300-1)		NA						
LNAV/VNAV DA	1985-1	274 (300-1)		NA						
LNAV MDA	2060-1	349 (400-1)		NA						
CIRCLING	2140-1 429 (500-1)	2180-1 469 (500-1)	2180-1½ 469 (500-1½)	NA						

SC-2, 03 DEC 2020 to 31 DEC 2020

SC-2, 03 DEC 2020 to 31 DEC 2020