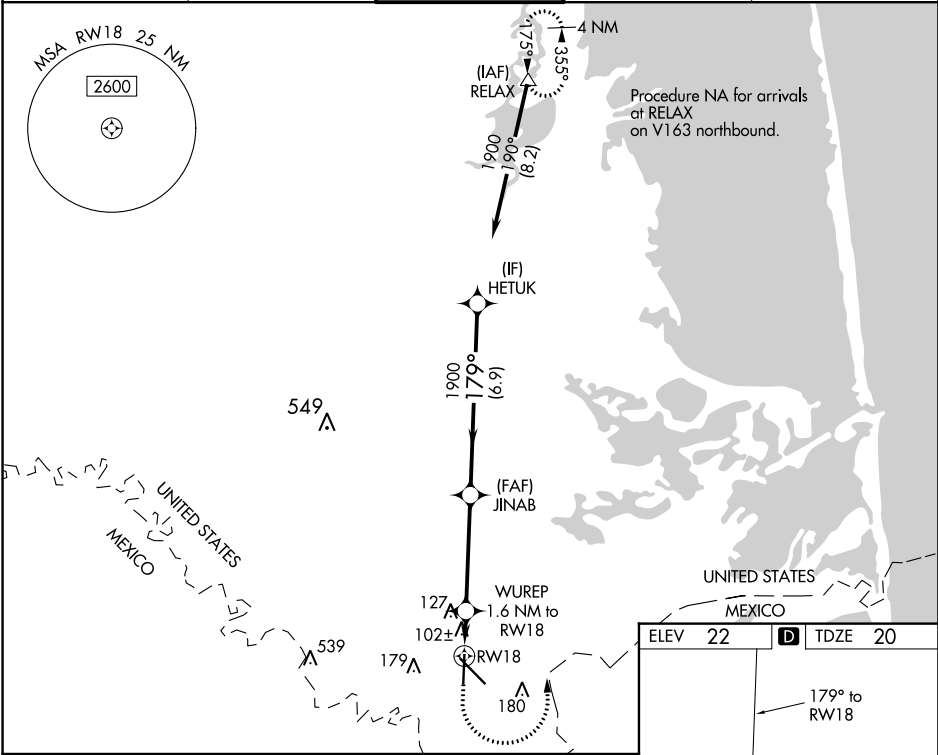


WAAS CH <b>93739</b> <b>W18A</b>	APP CRS <b>179°</b>	Rwy Idg <b>5810</b> TDZE <b>20</b> Apt Elev <b>22</b>
--	------------------------	---

**RNAV (GPS) RWY 18**  
BROWNSVILLE/SOUTH PADRE ISLAND INTL (BRO)

RNP APCH. RADAR required.	MISSED APPROACH: Climb to 500 then climbing left turn to 1900 direct RELAX and hold.
▼ Rwy 18 helicopter visibility reduction below 3/4 SM NA. When local altimeter not received, use Port Isabel altimeter setting and increase all MDA 40 feet; increase LNAV Cats C and D visibility 1/8 mile and Circling Cat D 1/4 mile.	

ATIS <b>128.55</b>	VALLEY APP CON <b>119.5 257.6</b>	BROWNSVILLE TOWER ★ <b>118.9 (CTAF) 239.3</b>	GND CON <b>121.9</b>	UNICOM <b>122.95</b>
-----------------------	--------------------------------------	--	-------------------------	-------------------------



HETUK		JINAB		500	1900	RELAX
1900		1900		WUREP 1.6 NM to RWY 18		
		3.00° TCH 50		560		
6.9 NM		4.2 NM		1.6 NM		
CATEGORY	A	B	C	D		
LP MDA		360-1	340 (400-1)			
LNAV MDA		380-1	360 (400-1)			
CIRCLING	440-1 418 (500-1)	540-1 518 (600-1)	540-1½ 518 (600-1½)	680-2 658 (700-2)		

