

HI-TACAN RWY 31L

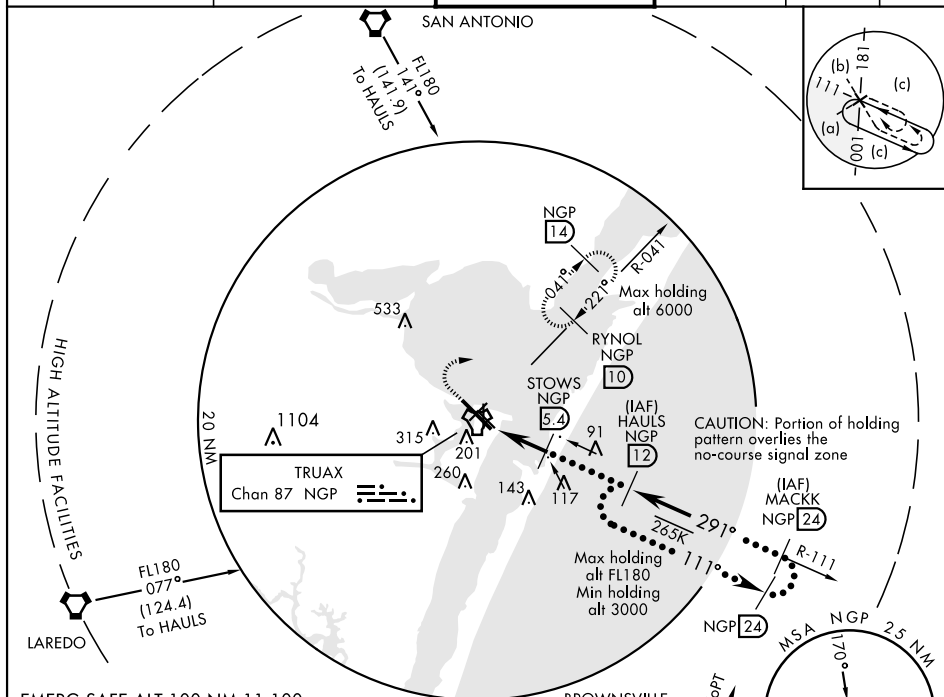
TACAN NGP Chan 87	APCH CRS 291°	Rwy Idg TDZE Arpt Elev	8002 18 19
-----------------------------	-------------------------	------------------------------	---------------------------------------

JAL-98 [USN]

CORPUS CHRISTI NAS (TRUAX FLD) (KNGP)

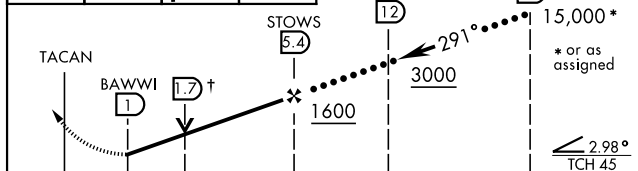
<p>When local altimeter setting not received, use Corpus Christi altimeter setting.</p>	<p>MISSED APPROACH: Climb to 1600 direct NGP TACAN and turn right to intercept R-041 and hold.</p>
---	--

<p>ATIS ★ 127.9 290.9</p>	<p>CORPUS CHRISTI APP CON 127.5 259.3</p>	<p>NAVY CORPUS TOWER ★ 134.85 0 340.2</p>	<p>GND CON 118.7 257.85</p>	<p>CLNC DEL 314.3</p>	<p>ASR/ PAR</p>
--------------------------------------	--	--	--	----------------------------------	---------------------

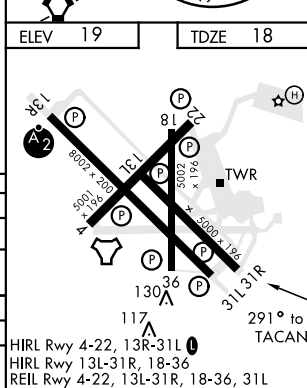


EMERG SAFE ALT 100 NM 11,100

1600	NGP	RYNOL R-041	† VDP NA when using Corpus Christi altimeter setting.
		10	



CATEGORY	C	D	E
S-31L	420-1 1/8	402 (500-1 1/8)	
CIRCLING	540-1 1/2 521 (600-1 1/2)	620-2 601 (700-2)	620-2 1/4 601 (700-2 1/4)
CORPUS CHRISTI ALTIMETER SETTING			
S-31L	460-1 3/8	442 (500-1 3/8)	
CIRCLING	580-1 1/2 561 (600-1 1/2)	660-2 641 (700-2)	660-2 1/4 641 (700-2 1/4)



CORPUS CHRISTI, TEXAS

27°42'N-97°17'W

CORPUS CHRISTI NAS (TRUAX FLD) (KNGP)

Amdt 1 16JUL20

HI-TACAN RWY 31L