

ILS Z or LOC/DME RWY 13R

AL-98 [USN]

CORPUS CHRISTI NAS (TRUAX FLD) (KNGP)

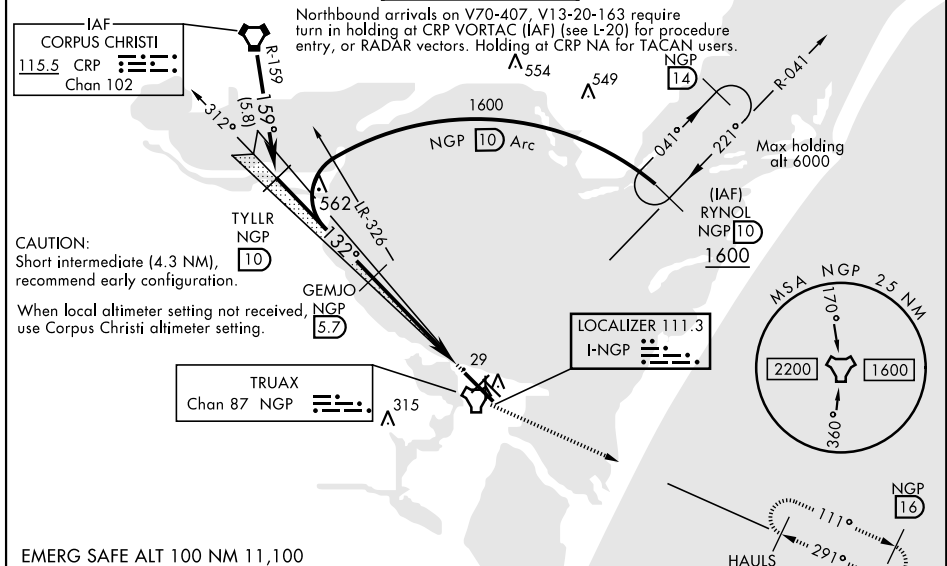
LOC I-NGP 111.3	APCH CRS 132°	Rwy Idg 8002 TDZE 13 Arpt Elev 19
---------------------------	-------------------------	--

DME Required.

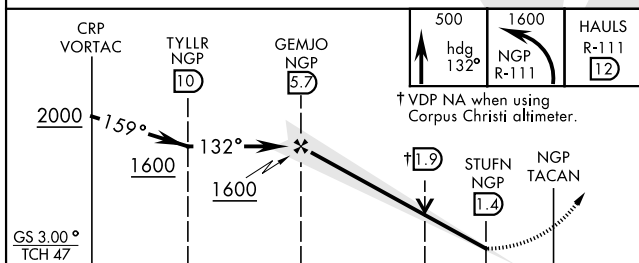
SALSF

MISSED APPROACH: Climb to 500 hdg 132°, then climbing left turn to 1600 and intercept NGP TACAN R-111 to HAULS and hold.

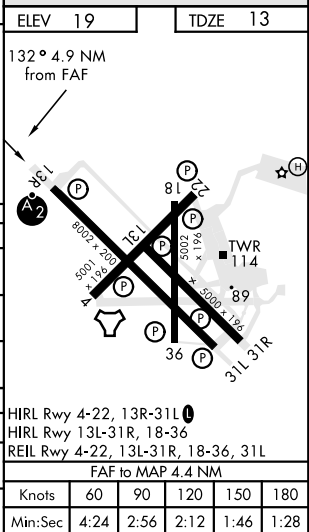
ATIS ★ 127.9 290.9	CORPUS CHRISTI APP CON 128.675 343.75	NAVY CORPUS TOWER ★ 134.850 340.2	GND CON 118.7 257.85	CLNC DEL 314.3	ASR/ PAR
-----------------------	--	--------------------------------------	-------------------------	-------------------	-------------



EMERG SAFE ALT 100 NM 11,100



CATEGORY	A	B	C	D
S-ILS 13R	213- $\frac{3}{4}$	200	(200- $\frac{3}{4}$)	
S-LOC/DME 13R*	380- $\frac{3}{4}$	367	(400- $\frac{3}{4}$)	
C CIRCLING	480-1	461 (500-1)	540-1 $\frac{1}{2}$ 521 (600-1 $\frac{1}{2}$)	620-2 601 (700-2)
CORPUS CHRISTI ALTIMETER SETTING				
S-ILS 13R	245- $\frac{3}{4}$	232	(300- $\frac{3}{4}$)	
S-LOC/DME 13R **	420- $\frac{3}{4}$	407 (500- $\frac{3}{4}$)	420-1	407 (500-1)
C CIRCLING	500-1 481 (500-1)	520-1 501 (600-1)	580-1 $\frac{1}{2}$ 561 (600-1 $\frac{1}{2}$)	660-2 641 (700-2)



CORPUS CHRISTI, TEXAS

27°42'N-97°17'W

CORPUS CHRISTI NAS (TRUAX FLD) (KNGP)

Amdt 1 16JUL20

ILS Z or LOC/DME RWY 13R

SC-3, 03 DEC 2020 to 31 DEC 2020

SC-3, 03 DEC 2020 to 31 DEC 2020