

RNAV (GPS) RWY 4

APCH CRS	Rwy Idg	5001
042°	TDZE	17
	Arpt Elev	19

AL-98 [USN]

CORPUS CHRISTI NAS (TRUAX FLD) (KNGP)

RNP APCH - DME/DME RNP 0.3 NA.

T For uncompensated Baro-VNAV systems, LNAV/VNAV NA below -15°C (5°F) or above 42°C (108°F)

MISSED APPROACH: Climb to 2000 direct FOLEM and hold.

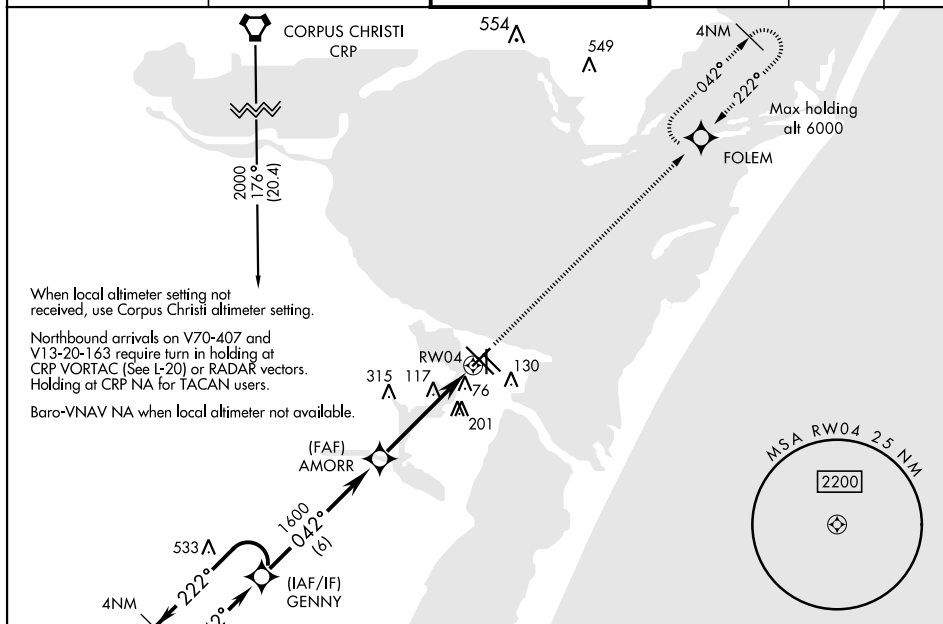
ATIS ★
127.9 290.9

CORPUS CHRISTI APP CON
128,675 343.75

NAVY CORPUS TOWER ★
134.85 340.2

118.7 257.85

CLNC DEL
314.3

ASR/
PAR

When local altimeter setting not received, use Corpus Christi altimeter setting.

Northbound arrivals on V70-407 and V13-20-163 require turn in holding at CRP VORTAC (See L-20) or RADAR vectors. Holding at CRP NA for TACAN users.

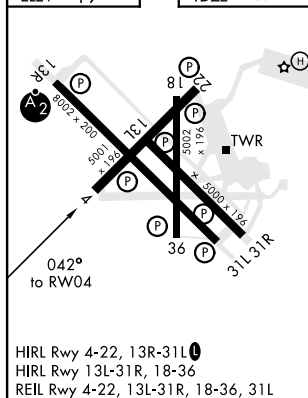
Baro-VNAV NA when local altimeter not available.

Max holding
alt 6000

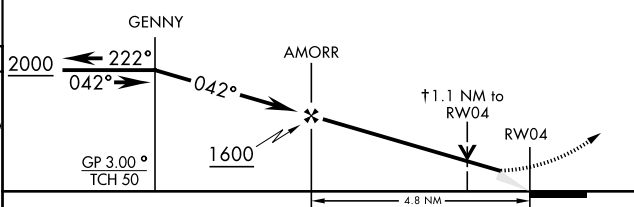
EMERG SAFE ALT 100 NM 11,100

ELEV 19

TDZE 17



HIRL Rwy 4-22, 13R-31L **L**
HIRL Rwy 13L-31R, 18-36
REIL Rwy 4-22, 13L-31R, 18-36, 31L

† LNAV only
VDP NA when using Corpus Christi
altimeter setting.

CATEGORY	A	B	C	D
LNAV/VNAV DA	268- $\frac{3}{4}$		251	(300- $\frac{3}{4}$)
LNAV MDA	420-1	403 (500-1)	420-1 $\frac{1}{8}$	403 (500-1 $\frac{1}{8}$)
C CIRCLING	480-1	461 (500-1)	540-1 $\frac{1}{2}$ 521 (600-1 $\frac{1}{2}$)	620-2 601 (700-2)
CORPUS CHRISTI ALTIMETER SETTING				
LNAV MDA	440-1	423 (500-1)	440-1 $\frac{1}{4}$	423 (500-1 $\frac{1}{4}$)
C CIRCLING	500-1 481 (500-1)	520-1 501 (600-1)	580-1 $\frac{1}{2}$ 561 (600-1 $\frac{1}{2}$)	660-2 641 (700-2)

CORPUS CHRISTI, TEXAS

27°42'N-97°17'W

CORPUS CHRISTI NAS (TRUAX FLD) (KNGP)

Amdt 1 16JUL20

RNAV (GPS) RWY 4

SC-3, 03 DEC 2020 to 31 DEC 2020