

TACAN RWY 18

TACAN NGP Chan 87	APCH CRS 192°	Rwy Idg 5002 TDZE 19 Arpt Elev 19
-----------------------------	-------------------------	--

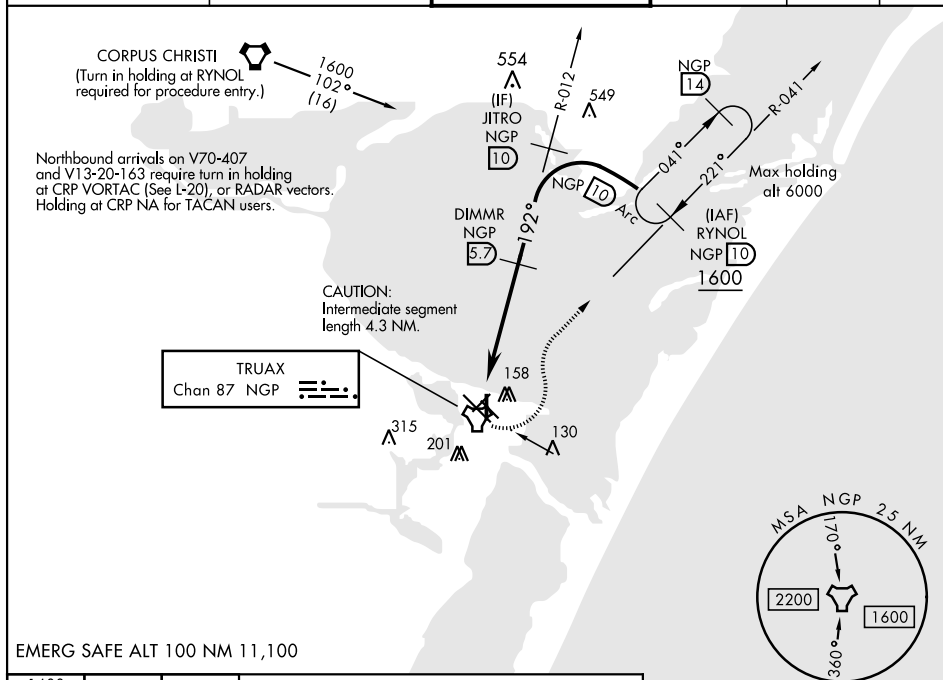
AL-98 [USN]

CORPUS CHRISTI NAS (TRUAX FLD) (KNGP)

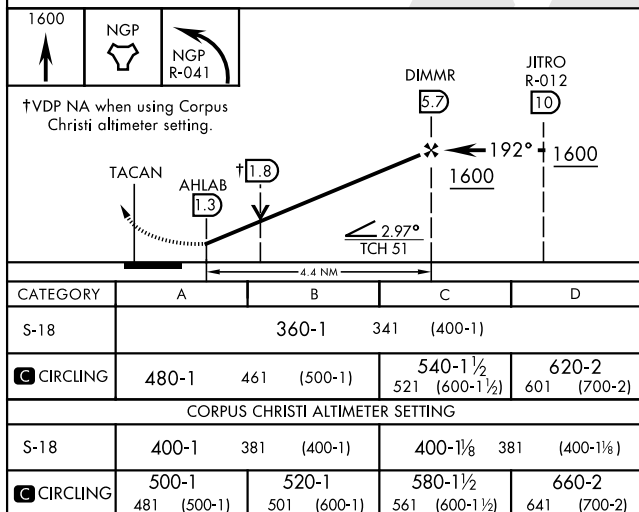
T When local altimeter setting not received, use Corpus Christi altimeter setting.

MISSED APPROACH: Climb to 1600 direct NGP TACAN and turn left to intercept R-041 to RYNOL and hold.

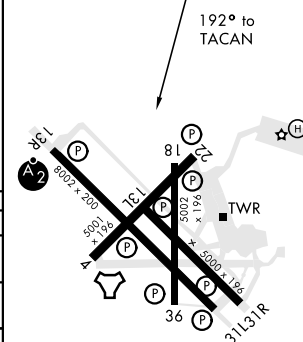
<p>ATIS ★</p> <p>127.9 290.9</p>	<p>CORPUS CHRISTI APP CON</p> <p>128.675 343.75</p>	<p>NAVY CORPUS TOWER ★</p> <p>134.85 0 340.2</p>	<p>GND CON</p> <p>118.7 257.85</p>	<p>CLNC DEL</p> <p>314.3</p>	<p>ASR/ PAR</p>
----------------------------------	---	--	------------------------------------	------------------------------	---------------------



EMERG SAFE ALT 100 NM 11,100



ELEV 19		TDZE 19
---------	--	---------



HIRL Rwy 4-22, 13R-31L
HIRL Rwy 13L-31R, 18-36
REIL Rwy 4-22, 13L-31R, 18-36, 31L

CORPUS CHRISTI, TEXAS

27°42'N-97°17'W

CORPUS CHRISTI NAS (TRUAX FLD) (KNGP)

Amdt 1 16JUL20

TACAN RWY 18