

TACAN Z RWY 31L

TACAN NGP Chan <b>87</b>	APCH CRS <b>291°</b>	Rwy Idg <b>8002</b> TDZE <b>18</b> Arpt Elev <b>19</b>
-----------------------------	-------------------------	--

AL-98 [USN]

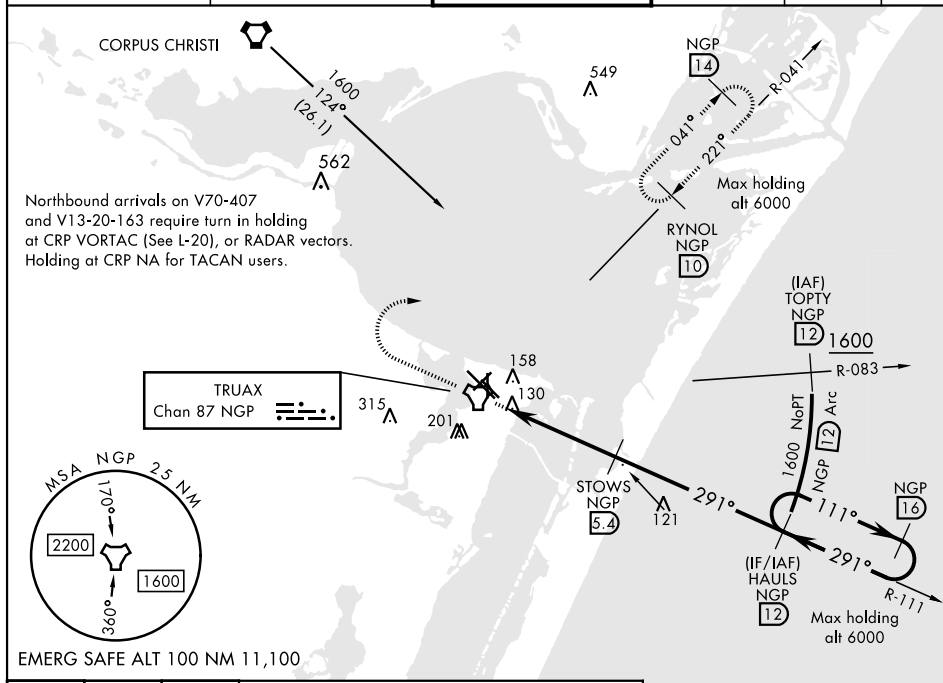
CORPUS CHRISTI NAS (TRUAX FLD) (KNGP)





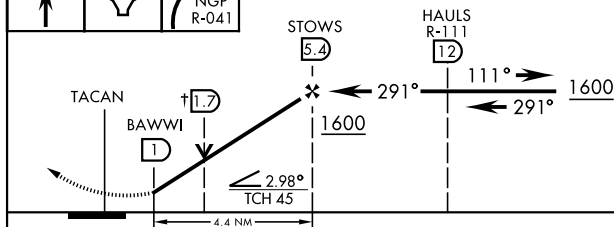
When local altimeter setting not received,  
use Corpus Christi altimeter setting.

**MISSED APPROACH:** Climb to 1600 direct NGP TACAN and turn right to intercept R-041 to RYNOL and hold.

ATIS ★ 127.9 290.9	CORPUS CHRISTI APP CON 128.675 343.75	NAVY CORPUS TOWER ★ 134.85 0 340.2	GND CON 118.7 257.85	CLNC DEL 314.3	ASR/ PAR
-----------------------	--	---------------------------------------	-------------------------	-------------------	-------------




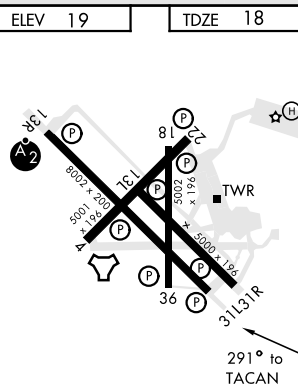
1600 ↑	NGP 	 NGP R-041	† VDP NA when using Corpus Christi altimeter setting
		STOWS	HAULS



CATEGORY	A	B	C	D
S-31L	420-1 402 (500-1)	420-1 1/8 402 (500-1 1/8)		
C CIRCLING	480-1 461 (500-1)	540-1 1/2 521 (600-1 1/2)	620-2 601 (700-2)	

## CORPUS CHRISTI|ALTIMETER SETTING

S-31L	460-1	442 (500-1)	460-1 $\frac{3}{8}$	442 (500-1 $\frac{3}{8}$ )
 CIRCLING	500-1 481 (500-1)	520-1 501 (600-1)	580-1 $\frac{1}{2}$ 561 (600-1 $\frac{1}{2}$ )	660-2 641 (700-2)



HIRL Rwy 4-22, 13R-31L **L**  
HIRL Rwy 13L-31R, 18-36  
REIL Rwy 4-22, 13L-31R, 18-36, 31L

CORPUS CHRISTI, TEXAS

27°42'N-97°17'W

CORPUS CHRISTI NAS (TRUAX FLD) (KNGP)

Amdt 1 16JUL20

TACAN Z RWY 31L

SC-3, 03 DEC 2020 to 31 DEC 2020