

CORPUS CHRISTI, TEXAS

VORTAC CRP <b>115.5</b> Chan <b>102</b>	APCH CRS <b>139°</b>	Rwy Idg TDZE <b>13</b> Arpt Elev <b>19</b>
---	-------------------------	--

# VOR/DME or TACAN Y RWY 13R

AL-98 [USN]

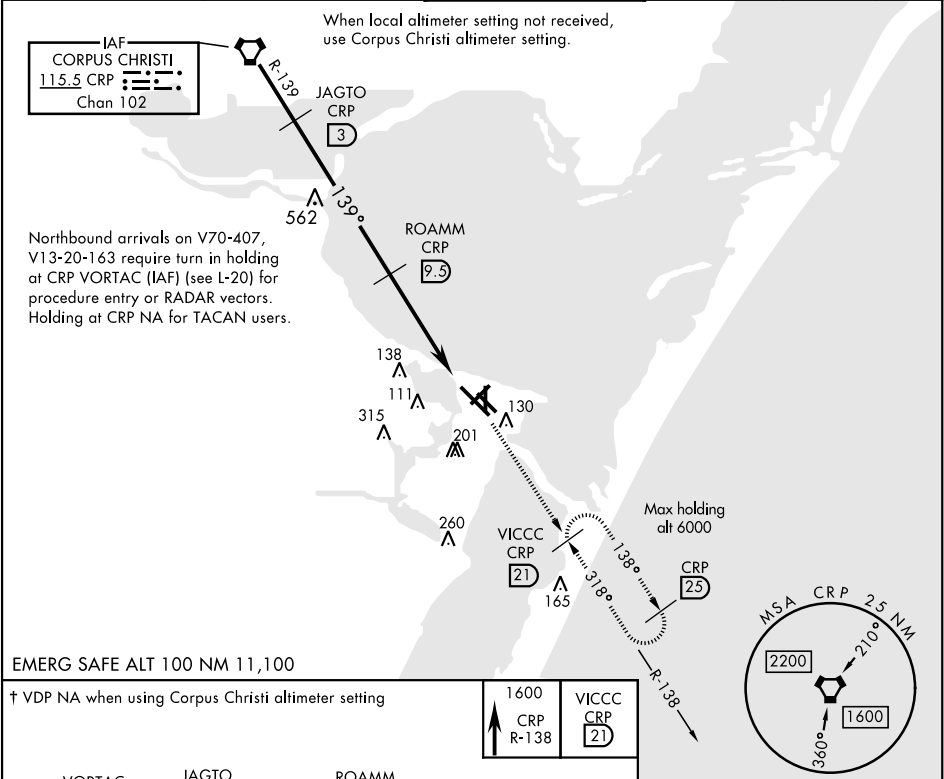
CORPUS CHRISTI NAS (TRUAX FLD) (KNGP)

**V** \* When ALS inop, increase CAT AB vis to 1 mile, CAT CD vis to 1½ miles.  
\*\* When ALS inop, increase CAT AB vis to 1 mile, CAT CD vis to 1½ miles.



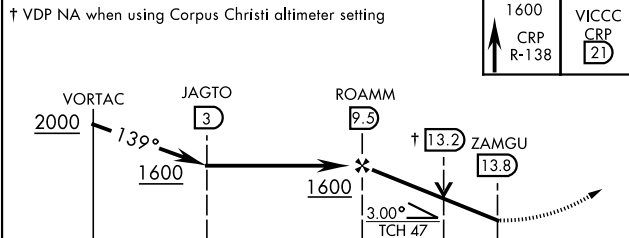
MISSED APPROACH: Climb to 1600 on CRP VORTAC R-138 to VICCC and hold.

ATIS ★ <b>127.9 290.9</b>	CORPUS CHRISTI APP CON <b>128.675 343.75</b>	NAVY CORPUS TOWER ★ <b>134.85 340.2</b>	GND CON <b>118.7 257.85</b>	CLNC DEL <b>314.3</b>	ASR/ PAR
------------------------------	---	--	--------------------------------	--------------------------	----------

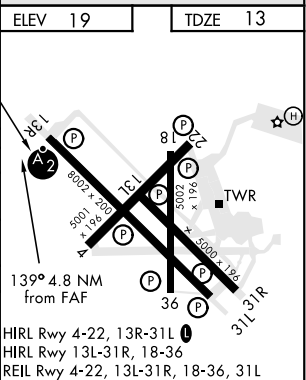


EMERG SAFE ALT 100 NM 11,100

† VDP NA when using Corpus Christi altimeter setting



CATEGORY	A	B	C	D
S-13R *	420-¾ 407 (500-¾)	420-1 407 (500-1)		
CIRCLING	480-1 461 (500-1)	540-1½ 521 (600-1½)	620-2 601 (700-2)	
CORPUS CHRISTI ALTIMETER SETTING				
S-13R **	460-¾ 447 (500-¾)	460-1 447 (500-1)		
CIRCLING	500-1 481 (500-1)	520-1 501 (600-1)	580-1½ 561 (600-1½)	660-2 641 (700-2)



CORPUS CHRISTI, TEXAS

27°42'N-97°17'W

CORPUS CHRISTI NAS (TRUAX FLD) (KNGP)

Amdt 1 16JUL20

# VOR/DME or TACAN Y RWY 13R