

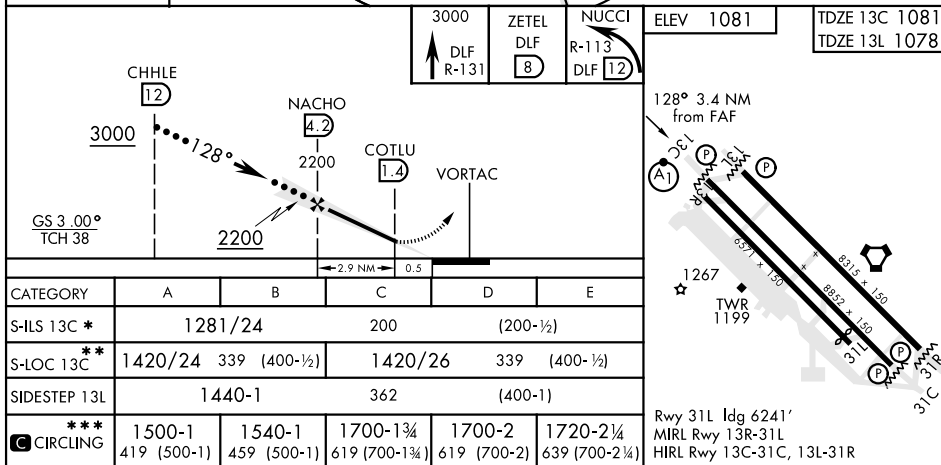
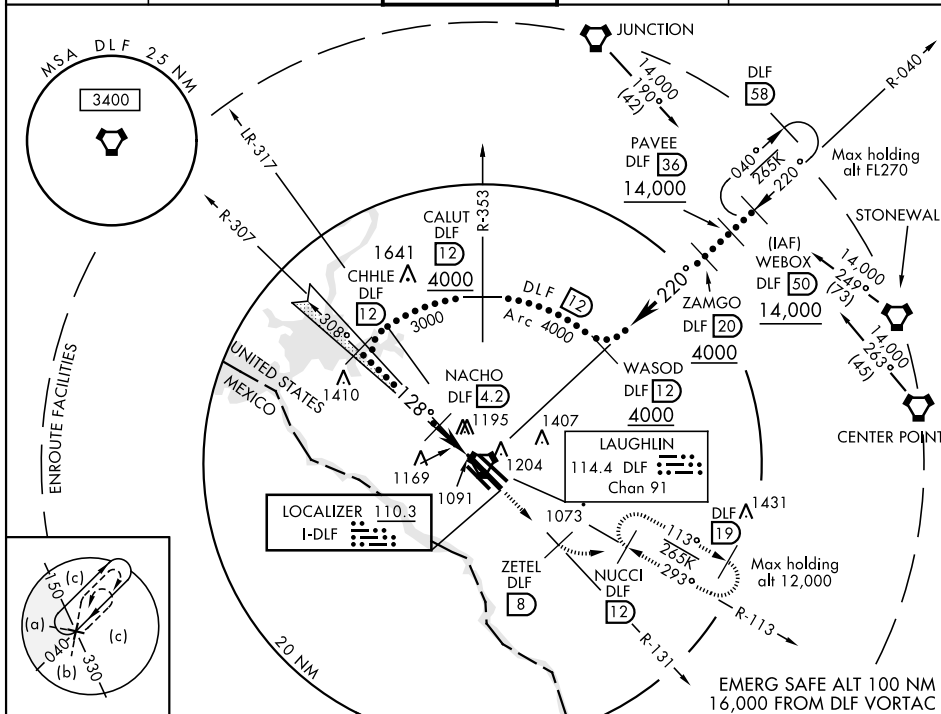
JAL-111 [USAF] LAUGHLIN AFB (KDLF)

ALSF-1

MISSED APPROACH: Climb to 3000 on DLF VORTAC R-131 to 8 DME (ZETEL), then turn left to intercept DLF R-113 to 12 DME (NUCCI) and hold.

ATIS ★ 114.4 269.9	DEL RIO APP CON 119.6 259.1	LAUGHLIN TOWER ★ 125.2 307.375	GND CON 275.8	CLNC DEL 120.5 335.8
-----------------------	--------------------------------	-----------------------------------	------------------	-------------------------



LAUGHLIN AFB (KDLF)

HI-ILS or LOC/DME RWY 13C