

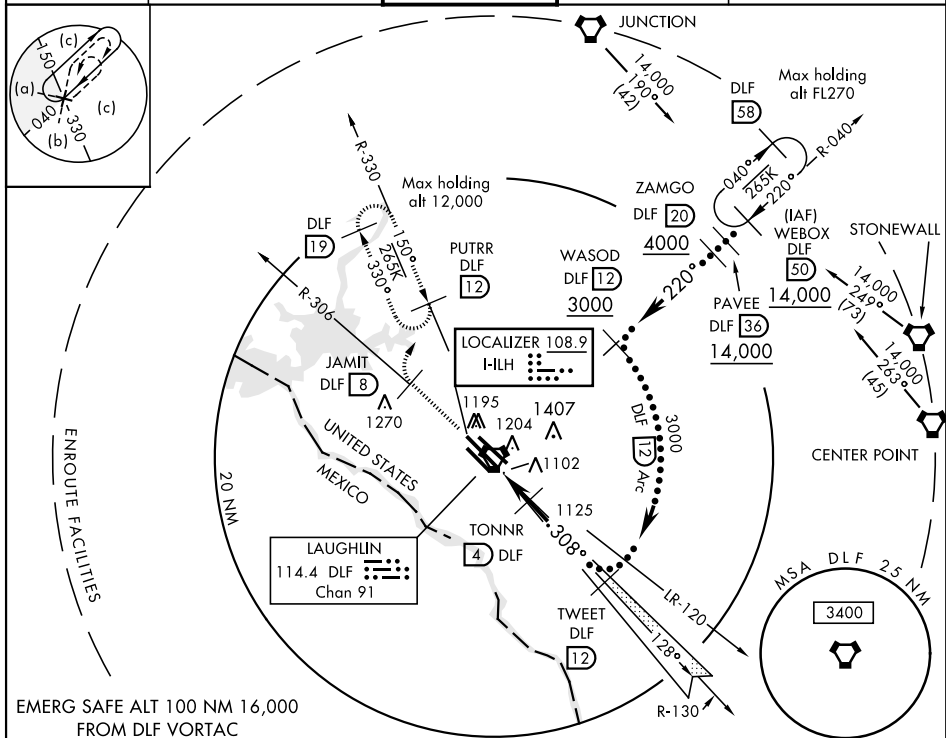
LOC HLH 108.9	APCH CRS 308°	Rwy Idg 31C 8852 31R 8315 TDZE 31C 1078 31R 1077 Arpt Elev 1081
-------------------------	-------------------------	--

JAL-111 [USAF]

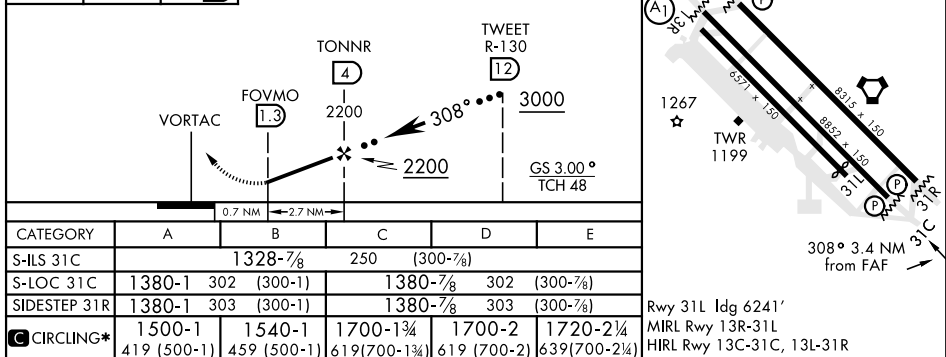
LAUGHLIN AFB (KDLF)

✈ * Circling not authorized in sector SW of Rwy 13R-31L.	MISSED APPROACH: Climb to 3000 on DLF VORTAC R-306 to 8 DME (JAMIT), then turn right to intercept DLF R-330 to 12 DME (PUTRR) and hold.
---	---

ATIS ★ 114.4 269.9	DEL RIO APP CON 119.6 259.1	LAUGHLIN TOWER ★ 125.2 307.375	GND CON 275.8	CLNC DEL 120.5 335.8
------------------------------	---------------------------------------	--	-------------------------	--------------------------------



3000 ↑ DLF R-306	JAMIT DLF 8 R-330 DLF 12	VGSI and descent angles not coincidental.	ELEV 1081 TDZE 31C 1078 TDZE 31R 1077
---------------------	-----------------------------	---	---



CATEGORY	A	B	C	D	E
S-ILS 31C		1328-7/8	250	(300-7/8)	
S-LOC 31C	1380-1	302 (300-1)	1380-7/8	302 (300-7/8)	
SIDESTEP 31R	1380-1	303 (300-1)	1380-7/8	303 (300-7/8)	
CIRCLING*	1500-1 419 (500-1)	1540-1 459 (500-1)	1700-1 3/4 619 (700-1 3/4)	1700-2 619 (700-2)	1720-2 1/4 639 (700-2 1/4)

