

LOC I-ILH <b><u>108.9</u></b>	APCH CRS <b>308°</b>	Rwy Idg 31C <b>8852</b> 31R <b>8315</b> TDZE 31C <b>1078</b> 31R <b>1077</b> Arpt Elev <b>1081</b>
----------------------------------	-------------------------	----------------------------------------------------------------------------------------------------------

LAUGHLIN AFB (KDLF)

\* Circling W of Rwy 13R-31L not authorized.

**MISSED APPROACH:** Climb to 3000 on DLF VORTAC R-306 to 8 DME (JAMIT), then turn right to intercept DLF R-330 to 12 DME (PUTRR) and hold.

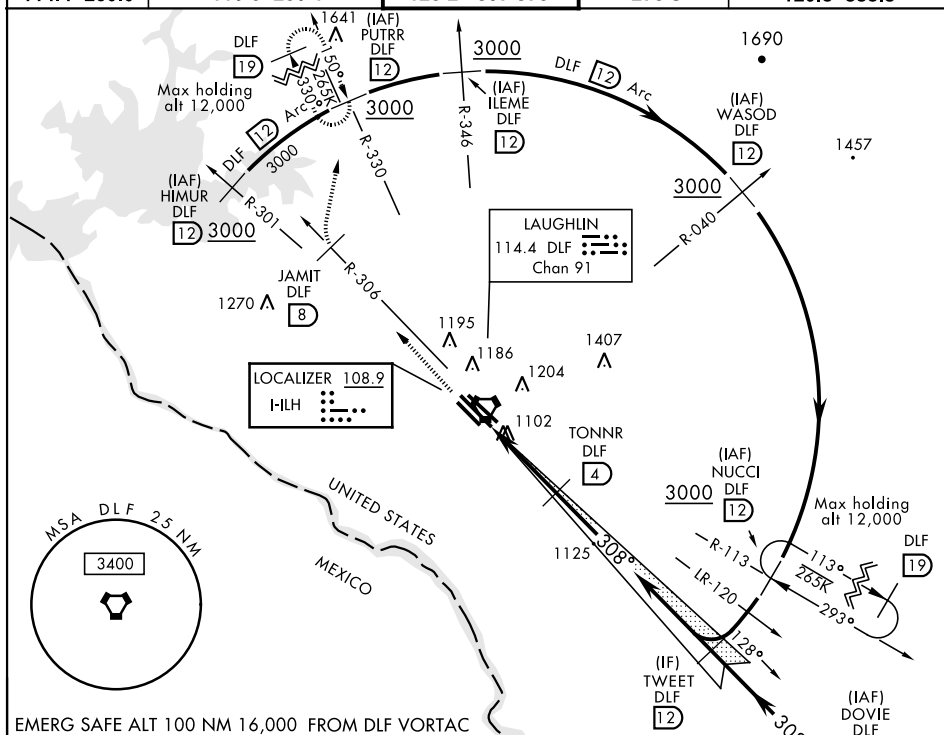
ATIS ★  
114.4 269

DEL RIO APP CON  
119.6 259.1

LAUGHLIN TOWER ★  
125.2 307.375

GND CON  
275.8

CLNC DEL  
**120.5 335.8**



EMERG SAFE ALT 100 NM 16,000 FROM DLF VORTAC

3000 ↑ DLF R-306	JAMIT DLF 8	PUTRR ↗ R-330 DLF 12
---------------------------	-------------------	-------------------------------

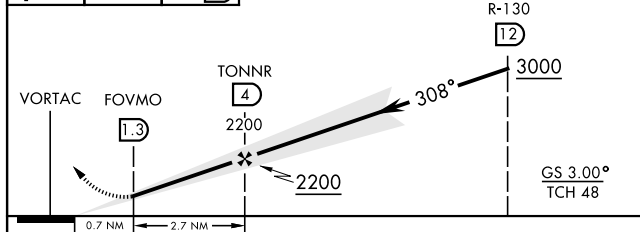
VGSI and descent  
angles not coincident


TWEET

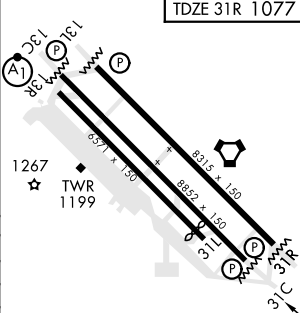
ELEV	10
------	----

TDZE 31C 1078

TDZE 31R 1077



CATEGORY	A	B	C	D	E
S-LS 31C	1328- $\frac{7}{8}$		250 (300- $\frac{7}{8}$ )		
S-LOC 31C	1380-1 302	(300-1)	1380- $\frac{7}{8}$ 302 (300- $\frac{7}{8}$ )		
SIDESTEP 31R	1380-1 303	(300-1)	1380- $\frac{7}{8}$ 303 (300- $\frac{7}{8}$ )		
 CIRCLING*	1500-1 419 (500-1)	1540-1 459 (500-1)	1700-134 619 (700-134)	1700-2 619 (700-2)	1720-2 $\frac{1}{4}$ 639 (700-2 $\frac{1}{4}$ )



Rwy 31L Idg 6241

MIRL Rwy 13R-31L

HIRL Rwy 13C-31C, 13L-31R

08° 3.4 NM  
from FAF

DEL RIO, TEXAS

29°22'N-100°47'W

LAUGHLIN AFB (KDLF)

## ILS or LOC/DME RWY 31C